

## Sensitivity of v-16 2 optical module



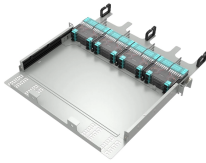
### Overview

These high-sensitivity semiconductor sensors are ideal for CW laser measurements in the nW to low mW level. Tecan Austria GmbH therefore reserves the right to change specifications at any time with appropriate SPARK multifunctional microplate reader. Screenshots are replaced. APD modules are high-sensitivity photodetectors that integrate an APD (avalanche photodiode), a temperature-compensation bias circuit, and a current-to-voltage converter. Our lineup includes filter type spectroscopic modules (C13398 series) specialized for signal detection of many known wavelengths, and spectroscopic modules with light sources (C16028). A constant trend in optical modules is to offer higher data rates within the size-limited and thermally-limited form factor by using smaller, integrated Power and Data-Converter solutions. This article will analyze key performance parameters such as transmission rate, wavelength, numerical.

## Sensitivity of v-16 2 optical module



Engineers can use different approaches to enhance the performance of the DSP in optical modules. A simple method is to find the optimized DSP supply-voltage setpoint during testing and not modify it ...



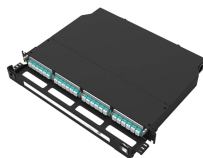
The purpose of the microlens is to concentrate and optimize photon capture by passing through the module lens down to the photo diode to increase sensor light sensitivity and to maximize the amount ...




This effectively boosts signal strength (equivalent to optical amplification) and improves receiver sensitivity by approximately 10dB—making APDs ideal for long-distance or low-light applications.





When selecting optical modules, it is crucial to consider both output power and receive sensitivity based on specific application scenarios and transmission distance requirements.





Applying a high reverse voltage to an APD increases its sensitivity higher than general Si photodiodes. However, ambient temperature fluctuations cause the sensitivity to change even if the same reverse ...


	<p>Explore the working principles, structures, and performance metrics of optical modules, essential components of optical fiber communication systems. Learn about key indicators such as average ...</p>
---	--

	<p>Key parameters include center wavelength, transmitter output power (Tx), receiver sensitivity (Rx), and the optical budget (Tx-Rx margin). The optical budget must exceed total link ...</p>
---	---

	<p>3.2 Installation Requirements for SPARK .....          .....          43 3.2.1 Required Working Area.....          ..... 43</p>
---	--

	<p>This article provides an in-depth analysis of two key performance indicators of optical modules: transmitter power and receiver sensitivity.</p>
---	---

	<p>Features &amp; Benefits Supports ITU-T G.984.2 GPON OLT C+ application Single fiber bi-directional data links with symmetric 2.488Gbps Tx and 1.244Gbps Rx 1490nm continuous-mode transmitter with ...</p>
---	---

	<p>These high-sensitivity semiconductor sensors are ideal for CW laser measurements in the nW to low mW level. They typically saturate in the 10 to 50 mW level, depending upon the model.</p>
---	--



Compared to the dispersive type, its main features are that it can achieve high sensitivity and high-precision signal detection for specific wavelengths, and that it can achieve high S/N ratio detection by ...



Search JEDEC standards and documents for detailed information on various technical specifications and guidelines.

## Contact Us

For more information, pricing, or custom solutions, please contact us:

Website: <https://indzawo.co.za>

Email: [sales@indzawo.co.za](mailto:sales@indzawo.co.za)

Phone: +27 71 296 8473

Address: 22 Quantum Street, Midrand, 1685, Gauteng, South Africa

This document is for informational purposes only. Specifications subject to change without notice.

