





Single-mode fiber optic module selection

Ordering information

NO.	1	2	3	4
Model	F5041	F5042	F51243	F51644
Product name	Patch Panel	Patch Panel	Patch Panel	Patch Panel
Illustration				
HU	1	2	3	4
Maximum number of cores	96	192	288	384
Product size (excluding modules and adapters)	482.6*208.7*43.7mm	482.6*208.7*88.1mm	482.6*208.7*132.5mm	482.6*208.7*177.7mm
Standard color code	RAL9005	RAL9005	RAL9005	RAL9005



Single-mode fiber optic module selection



Single Mode vs Multimode SFP Modules: Compare fiber types, wavelengths, cost, and transmission distance to select the right optical transceiver for your network.



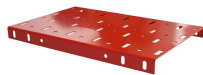
Choosing the right fiber optic transceiver is critical to network performance and cost-efficiency. This article dives into single mode SFP modules versus multimode options, helping ...



Many people encounter a core question when setting up a network: should I use multimode fiber or single-mode fiber? Today, ETU-LINK will thoroughly explain the differences ...



Learn how to choose the right SFP module based on compatibility, speed, fiber type, wavelength, and distance. Practical guide for engineers and IT buyers.



The most important factor in SFP selection is matching the module to the correct fiber type. Single-mode and multimode fibers operate under different conditions and require compatible ...



A guide to single-mode vs multimode SFP modules. Covers fiber types, wavelengths, distances, BiDi, CWDM/DWDM, SMF vs MMF selection, and application scenarios.



The most important factor in SFP selection is matching the module to the correct fiber type. Single-mode and multimode fibers operate under different ...



Confused by SFP vs SFP+? Read the definitive 2026 guide on SFP modules. We explain Single Mode vs Multimode, DDM diagnostics, and how to choose the right transceiver for Cisco, Juniper, and more.



This comprehensive guide explores Single-Mode Fiber Optic Cable, covering technical specifications, deployment scenarios, and best practices to help you optimize your fiber infrastructure ...



This guide demystifies SFP modules, exploring their design, types, key differences from related modules (like SFP+, SFP28, and QSFP), and actionable tips for selecting the right one for ...



Confused about whether your SFP is single-mode or multimode? Learn the differences, visual cues, wavelength ranges, and compatibility to avoid mismatched fiber connections and costly ...

Contact Us

For more information, pricing, or custom solutions, please contact us:

Website: <https://indzawo.co.za>

Email: sales@indzawo.co.za

Phone: +27 71 296 8473

Address: 22 Quantum Street, Midrand, 1685, Gauteng, South Africa

This document is for informational purposes only. Specifications subject to change without notice.

