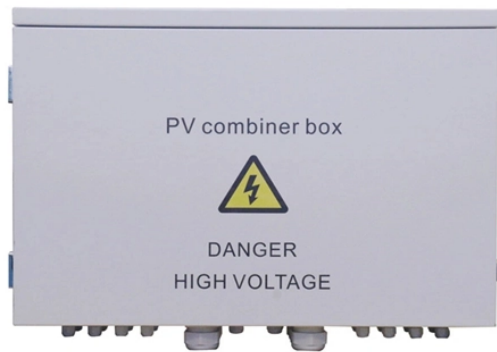


Slide the circuit breaker distribution box upwards



Slide the circuit breaker distribution box upwards



A detailed diagram of a breaker box, showing its components and how they function to protect electrical systems from overloads and faults.



What are the common causes of a tripped circuit breaker in a distribution box? Circuit overload, short circuits, ground leakage, faulty wiring, and defective appliances can cause a circuit ...



Master the safest and most efficient circuit breaker wiring configurations. Learn about single-phase vs. three-phase setups, safety standards, and future-proof electrical planning.



No description has been added to this video. Enjoy the videos and music you love, upload original content, and share it all with friends, family, and the world on .



Your breaker panel controls the electrical distribution throughout your home from a single location—and it's easier to understand than you might expect. This guide will show you how to read ...



Master the safest and most efficient circuit breaker wiring configurations. Learn about single-phase vs. three-phase setups, safety standards, and future-proof electrical ...



The orange slide enables external switching of the enclosed breaker, and can be activated by a handheld hooked rod or linkstick (through a 17 mm hole in the slide) from the ground. This eliminates ...



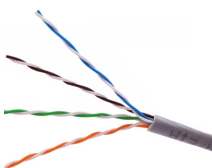
You might feel a little nervous about opening your distribution box, but you can do it safely if you follow some simple steps. Let's walk through what you need to know before you start.



Learn how to read a circuit breaker panel and decode the labeling to understand the functions of each component in a circuit breaker panel.



In most residential panels, the standard orientation dictates that the switch is in the "ON" position when toggled upward, toward the top of the panel. Conversely, the "OFF" position is ...



Can I wire up a circuit breaker box myself? While some homeowners may attempt this, it's highly recommended to hire a qualified, licensed electrician for circuit breaker box wiring.

Contact Us

For more information, pricing, or custom solutions, please contact us:

Website: <https://indzawo.co.za>

Email: sales@indzawo.co.za

Phone: +27 71 296 8473

Address: 22 Quantum Street, Midrand, 1685, Gauteng, South Africa

This document is for informational purposes only. Specifications subject to change without notice.

