

Southeast Asia Secondary Distribution Box System Diagram



Southeast Asia Secondary Distribution Box System Diagram



The Secondary distribution system caters to the power demands of residential consumers, small factories, shops, and other commercial setups. Domestic or residential consumers ...



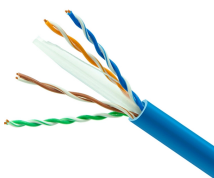
Distributed Energy Systems (DESS) can solve these challenges due to the increasing availability of small power generation and intelligent grid technologies. It is necessary to find what ...



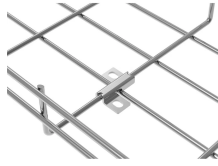
HV substation layout design, protection and control engineering, SCADA integration, and detailed electrical network design, all tailored to meet the evolving needs of modern power systems.



Various power system components, like Circuit breaker, OHL, cables, and secondary equipment like protection relay, distribution automation are presented. The distribution system from ...



The Secondary distribution system receives power from secondary side of distribution transformer at low voltage and supplies power to various connected loads via, service lines.



Secondary distribution network includes medium voltage/low voltage (MV/LV) step-down transformers and LV lines, for example, 230 and 400 V, which deliver the power generated to LV commercial and ...



The increasing demand for electricity, especially in semi-urban areas, has posed significant challenges to the reliability of the electrical distribution system.



Three main secondary voltages used for most residential/ commercial/industrial applications. Substation normally use 4 wire, multi-ground Y configurations to distribute power ...



Some typical primary distribution system configurations are shown in Figure 2. A spot network typically comprises a secondary network that serves a singular, concentrated load, such as ...



Generally, the secondary distribution systems are designed in single phase for areas of residential customers and in three phase for areas of industrial or commercial customers with high ...



Adopt a holistic approach to power system planning, by integrating cross-sectoral dynamics, incorporating resilience in addition to security and efficiency and leveraging global expertise.

Contact Us

For more information, pricing, or custom solutions, please contact us:

Website: <https://indzawo.co.za>

Email: sales@indzawo.co.za

Phone: +27 71 296 8473

Address: 22 Quantum Street, Midrand, 1685, Gauteng, South Africa

This document is for informational purposes only. Specifications subject to change without notice.

