

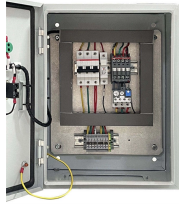
## Spacing Requirements for Cable Tray Integrated Supports



### Overview

Cable Management Tray Size: Choose a tray size that will hold the desired amount and length of cable. The National Electrical Code (NEC) covers many aspects of cable tray supports and fittings. The National Electrical Code is a set of principles designed to promote public safety and welfare, as well as safeguard public health by regulating the design and operation of electrical facilities and. Let's dive deeper into the specific cable tray spacing requirements that you need to consider during installation to ensure both functionality and safety. The Cable Tray ng standards, performance standards, test standards and application in this document have been tested extensively by competent professional engineers completely installed, without damage either to conductors or. Cable tray (or cable ladder) systems are a popular alternative to electrical conduit systems, as they have an outstanding record for dependable service, design flexibility and cost savings in commercial and industrial applications.

## Spacing Requirements for Cable Tray Integrated Supports



Explore the essential cable tray support spacing requirements for safe and efficient installations. Learn NEC guidelines for perforated, ladder, and wire mesh trays.



White Cabling

Master NEC Article 392 with our comprehensive guide. Learn essential cable tray requirements for installation, grounding, and fill capacity to ensure full electrical compliance.



Cable tray length is selected based on the load to be supported, the distance between the supports (also referred to as the span), and handling and installation constraints.



Four different mesh cable tray types are available, depending on the requirements, area of application and cable quantity. The innovative Magic connection system of the GRM and G-GRM mesh cable ...



B-Line series straight cable tray sections allow for the structural supports to be spaced up to 6m (20 ft) for steel cable ladder and up to 12m (40 ft) with aluminum cable ladder.



Discover the essential cable tray spacing requirements for safe and efficient installation. Learn key standards, horizontal and vertical spacing, and more.



Support spacing for cable trays must align with the manufacturer's instructions, as outlined in NEC 392.30 (A). Generally, standard trays require supports every 6 to 10 feet, while ...



A professional guide to installing electrical cable tray systems per NEC Article 392. Covers support, securing cables, and fill calculations.



Specifies requirements for metal cable trays and associated fittings designed for use in accordance with the rules of Canadian Electrical Code, Part I and the National Electrical Code®



Cable tray supports must be designed and installed per IEC 61537, NEMA VE 2, NEC, and ISO standards, with proper spacing (1.5–3 m), alignment, earthing, fire protection, and structural...



This article explains the main requirements and good practices for cable tray systems, including tray types, materials, loading, supports, bonding, cable selection, and installation details.

## Contact Us

For more information, pricing, or custom solutions, please contact us:

Website: <https://indzawo.co.za>

Email: [sales@indzawo.co.za](mailto:sales@indzawo.co.za)

Phone: +27 71 296 8473

Address: 22 Quantum Street, Midrand, 1685, Gauteng, South Africa

This document is for informational purposes only. Specifications subject to change without notice.

