

## Spacing of finished cable tray tees



### Overview

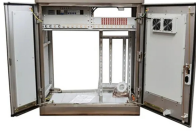
Cable Management Tray Size: Choose a tray size that will hold the desired amount and length of cable. Support Spacing: Remember the NEC requires no more than 4 feet of support spacing. Bend Radius: The tray cable bend radius should be supported to avoid damaging. Understanding cable tray spacing is key to meeting safety regulations and maintaining system performance. The spacing between trays, whether horizontal or vertical, depends on various factors like cable type, environment, and tray material. A rung spacing of 6 to 9 inches (150 to 230 mm) is preferable when the cable tray is used for instrumentation and control applications that require. Plan the Layout: Determine the route for the cable tray, considering the shortest path while avoiding obstructions. 16, tray fill, ampacity adjustment, voltage-drop checks, grounding, and IEC design cross-checks. Use NEC 392 for tray rules, but still size conductors from NEC 310. Tray fill, spacing, ambient temperature, and sun exposure. Is your cable tray system optimized for safety, dependability, space and cost savings?

Cable tray (or cable ladder) systems are a popular alternative to electrical

conduit systems, as they have an outstanding record for dependable service, design flexibility and cost savings in commercial and. info This item cannot be ordered online. Please contact our national customer service team at 1-855-347-2839 for additional assistance. Something incorrect?

Let us know to view pricing.

## Spacing of finished cable tray tees



The design and cost of the cable tray is greatly affected by this designation. In order to determine the most appropriate and economical system, a class should be selected that reflects the actual total ...



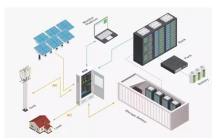
Our wind certification report provides you with list of acceptable B-Line series cable tray supports, fittings and covers based off of the environmental conditions, cable loading, and type of cable tray in your ...



When fitting cable trays and their accessories, the products are cut on site to create changes of direction, adjust sections, etc. Damage can also occur during handling; as a result, both the ...



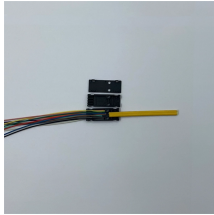
Discover the essential cable tray spacing requirements for safe and efficient installation. Learn key standards, horizontal and vertical spacing, and more.



Shop Eaton B-Line Series Kwikrail Cable Tray, Horizontal Tee Fitting, 6" Height, Aluminum, 9" Rung Spacing, 18" Width, 12" Radius By B-Line (Eaton) (KR6A09-18-HT12) At Graybar, Your Trusted ...



Support spacing for cable trays must align with the manufacturer's instructions, as outlined in NEC 392.30 (A). Generally, standard trays require supports every 6 to 10 feet, while ...



Typical support spacing for steel cable trays ranges from 1.5 meters to 6 meters depending on tray size, material gauge, and load conditions. Aluminum trays, having different material ...



To install the cable tray supports, first find the required elevation from the floor to the bottom of the cable tray and establish a level line with a laser or a nylon string.



Fill is the amount of tray width or cross-sectional space occupied by cables, which matters because crowded trays trap heat and make maintenance harder. [Step-by-Step Cable Tray Sizing ...](#)



Explore the essential cable tray support spacing requirements for safe and efficient installations. Learn NEC guidelines for perforated, ladder, and wire mesh trays.



Cable tray length is selected based on the load to be supported, the distance between the supports (also referred to as the span), and handling and installation constraints.

## Contact Us

For more information, pricing, or custom solutions, please contact us:

Website: <https://indzawo.co.za>

Email: [sales@indzawo.co.za](mailto:sales@indzawo.co.za)

Phone: +27 71 296 8473

Address: 22 Quantum Street, Midrand, 1685, Gauteng, South Africa

This document is for informational purposes only. Specifications subject to change without notice.

