

Specifications for grounding holes for cable trays



Overview

The core requirements for Cable Tray grounding, as per GB 50303-2015, GB 51348-2019, and CECS 31-2023, can be summarized as "metals must be grounded, connections must ensure conductivity, and multiple points must ensure reliability". Cable tray may be used as the Equipment Grounding Conductor (EGC) in any installation where qualified persons will service the installed cable tray system. The metal in cable trays may be used as the EGC as per the limitations. These systems provide an efficient and adaptable solution for managing a wide range of cables, including power cables, control cables, Ethernet, and fiber optic lines. It involves connecting cable trays to the facility's grounding system, providing a low-impedance path for fault currents and protecting personnel. that system to lose its UL Classification.

Specifications for grounding holes for cable trays



The core requirements for Cable Tray grounding, as per GB 50303-2015, GB 51348-2019, and CECS 31-2023, can be summarized as "metals must be grounded, connections must ...



A bare copper equipment grounding conductor should not be placed in an aluminum cable tray due to the potential for electrolytic corrosion of the aluminum cable tray in a moist environment. For such ...



Cables must be secured to the cable tray prior to and after the transition, and protected by guarding or location. The electrical connection between sections can be maintained with bonding jumpers or a ...



This comprehensive guide delves into the complexities of cable tray grounding, offering in-depth insights into its importance, principles, design ...



Bonding and grounding all conduits, cable trays, enclosures, cables, protectors, and other conductive infrastructure as per the requirements of the NEC and TIA 607 to main building ground.



This document discusses cable trays and their use as equipment grounding conductors. It provides the following key points: 1) Metal cable trays can be used ...



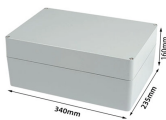
All metallic cable trays must be grounded as outlined in NEC Article 250.96, even if the tray isn't being used as an equipment grounding conductor (EGC). This precaution helps prevent ...



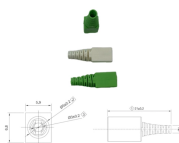
“Metallic cable trays that support electrical conductors shall be grounded as required for conductor enclosures in accordance with 250.96 and part IV of Article 250.”



The intent of this article is to review grounding practices for cable tray wiring systems. The Equipment Grounding Conductors are the most important conductors in the electrical systems. The Equipment ...



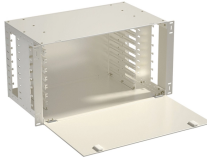
This article provides a comprehensive framework that governs various aspects of cable tray installations, including the types of cables that are deemed acceptable for use, requirements for ...



This technical data sheet provides detailed specifications, guidelines, and application information for Equipment Grounding Conductors (EGCs) used in cable tray systems.



Discover the best practices for Cable Tray Grounding Wire installation. Learn key requirements, safety tips, and material choices to ensure a grounding system.



This comprehensive guide delves into the complexities of cable tray grounding, offering in-depth insights into its importance, principles, design considerations, installation best practices, and ...

Contact Us

For more information, pricing, or custom solutions, please contact us:

Website: <https://indzawo.co.za>

Email: sales@indzawo.co.za

Phone: +27 71 296 8473

Address: 22 Quantum Street, Midrand, 1685, Gauteng, South Africa

This document is for informational purposes only. Specifications subject to change without notice.

