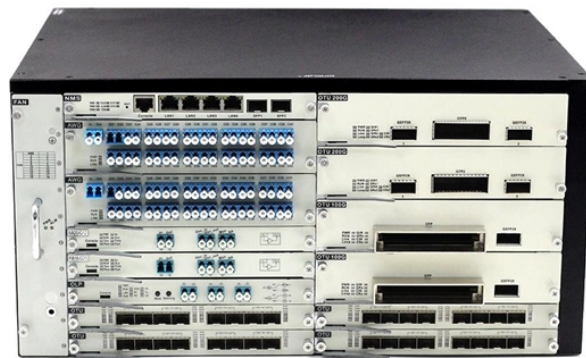


Spectrometer with $\pm 0.05\text{dB}$ accuracy direct sales



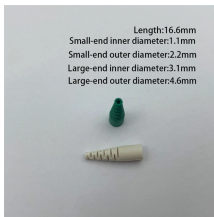
Spectrometer with ± 0.05 dB accuracy direct sales



CCD Spark Direct Full Spectrum High Precision Measurement Direct Reading Spectrometer Metal Direct Reading Spectrometer. 1 Year Warranty, 150-1100nm Range. | Alibaba



6511 Hillwood Dr, Riverdale, MD 20737 - 925 sqft home built in 1962 . Browse photos, take a 3D tour & see transaction details about this recently sold property. MLS# MDPG2081294.



Length:16.6mm
Small-end inner diameter:1.1mm
Small-end outer diameter:2.2mm
Large-end inner diameter:3.1mm
Large-end outer diameter:4.6mm

DW-TY-9000 is a Full Range of Solutions for the Entire Metals Industry. It uses full-digital technology to replace bulky photomultiplier tube (PMT) simulation technology and keep pace with international ...

LoRawan outdoor base station



6511 Hillwood Dr, Riverdale, MD 20737 is currently not for sale. The 925 Square Feet single family home is a 3 beds, 2 baths property. This home was built in 1962 and last sold on 2023-08-08 for ...



This makes the CompactLine especially suited for OEM users wanting to integrate a spectrometer into their own devices. To learn more about all the available options and to find the perfect setup that ...



Its record of reliability has helped make SPECTROMAXx perhaps the industry's best-selling arc/spark optical emission spectrometry (OES) analyzer. Its fast, accurate, cost-effective measurements add ...



Property Facts 6511 Hillwood Dr, Riverdale, MD is a single family home that contains 925 Sq. Ft. and was built in 1962. It contains 1.5 bathrooms. This home last sold for \$355,000 on 8/21/2023.



Welcome home to this brick front rambler home in Riverdale. The home has a nice fenced in yard with a beautiful deck and shed for your lawnmower. Roof, Deck, Stove just a few years old. Minutes away ...



The HyperFine spectrometer from LightMachinery is a compact spectrometer capable of 1 picometer resolution. Enabled by VIPA etalons produced by LightMachinery's patented fluid jet polishing ...



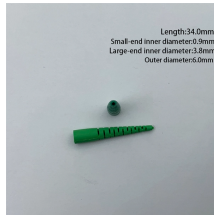
6511 HILLWOOD DRIVE, RIVERDALE, MD 20737 is a Single Family 925 sq. ft. home listed for sale. Realty has 4 photos available of this 3 bed, 2 bath house, listed at \$350,000. View sales and tax ...



Detached Residential real estate For sale at 6511 Hillwood Drive Riverdale MD 20737. Welcome home to this brick front rambler home in Riverdale. The home has a nice fenced in yard with a beautiful ...



The new LAMBDA® 365+ double-beam UV/Vis spectrometer delivers the performance researchers and analysts need to measure high absorbance liquids and unravel chemical kinetics.



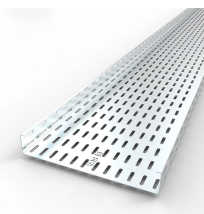
Sold - 6511 Hillwood Dr, Riverdale, MD - \$355,000. View details, map and photos of this single family property with 3 bedrooms and 2 total baths. MLS# MDPG2081294.



Find people by address using reverse address lookup for 6511 Hillwood Dr, Riverdale, MD 20737. Find contact info for current and past residents, property value, and more.



Off-Market: View photos (w/ FlyAround) and other property details for this 3 bed, 1.5 bath, 925 sqft. single family home located at 6511 Hillwood Dr, Riverdale, MD 20737.



Instrument Systems' latest CAS 140D IR1 spectroradiometer for measurements in the SWIR (short-wave infrared) wavelength range also offers the proven high measurement accuracy and reliability of the ...



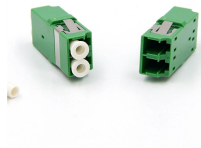
Find your direct-reading spectrometer easily amongst the 9 products from the leading brands (Shimadzu, PCE, DURAG, ...) on DirectIndustry, the industry specialist for your professional purchases.



The HyperFine spectrometer from LightMachinery is a compact spectrometer capable of 1 picometer resolution. Enabled by VIPA etalons produced by ...



Discover the best Lab Spectrometers in Best Sellers. Find the top 100 most popular items in Amazon Industrial & Scientific Best Sellers.



Introduce your students to spectroscopy with the affordable Go Direct SpectroVis Plus Spectrophotometer. Capable of connecting wirelessly or by USB, this device can easily collect a full ...

Contact Us

For more information, pricing, or custom solutions, please contact us:

Website: <https://indzawo.co.za>

Email: sales@indzawo.co.za

Phone: +27 71 296 8473

Address: 22 Quantum Street, Midrand, 1685, Gauteng, South Africa

This document is for informational purposes only. Specifications subject to change without notice.

