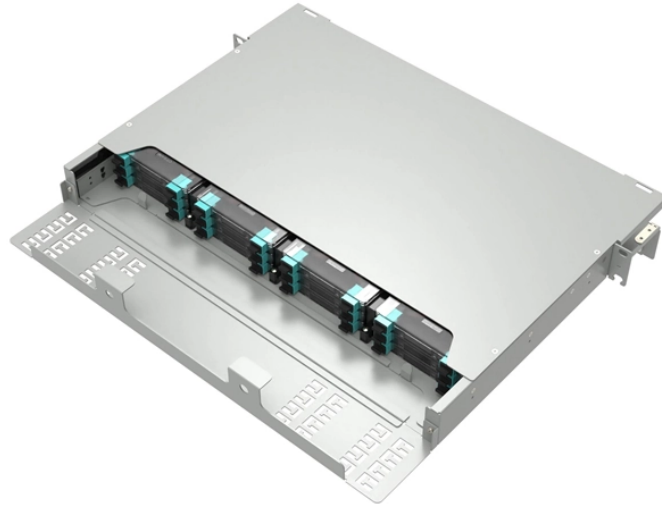


Standard Configuration of Basement Distribution Boxes



Standard Configuration of Basement Distribution Boxes



The latest NEC updates prioritize adaptive solutions for modern energy demands. With homes now packing solar arrays, EV chargers, and smart-home systems, distribution boxes work harder than ...



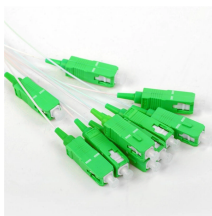
This box provides capacity for 48 fibers with SC adapters and 72 fibers with LC Duplex adapters.



This Code of Practice provides the details of the general principles to be applied to the design of distribution substations, including substations located at ground floor, basement, upper floor level ...



This document represents the minimum requirements and specifications for the installation of an electrical underground distribution system fed from padmounted transformation, serving garden style ...



Updating basement and attic wiring is not just a technical task—it requires an in-depth understanding of the NEC 2023 standards and how they apply to your specific situation.



mechanical areas, Local Distribution Frames (LDF's) on each floor, and the Building Distribution Frame (BDF), typically located in the basement, ground level, or first floor.



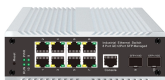
Read this instruction sheet thoroughly and carefully before installing the Vista Underground Distribution Switchgear. It is important that any missing, damaged, or faded labels on the equipment be replaced ...



A finished basement is a smart investment—but only when wired safely and strategically. Whether you're creating a cozy retreat or a rental-ready suite, expert basement electrical wiring sets ...



Include wiring diagrams and installation details of equipment indicating proposed location, layout and arrangement, control panels, accessories, piping, ductwork, and other items that must be shown...



If a building has only one basement, the substation/switch room should not be located in the basement. Furthermore, the substation's floor level must not be situated at the lowest point of the ...



Updating basement and attic wiring is not just a technical task—it requires an in-depth understanding of the NEC 2023 standards and how they ...



ICC Digital Codes is the largest provider of model codes, custom codes and standards used worldwide to construct safe, sustainable, affordable and resilient ...



Circuit Planning for Basement Needs Effective basement wiring begins with calculating the required electrical load and mapping out the circuits to serve the space safely. General ...



According to the MDU configuration, several modules can be set on top of each other to form an assembly suitable for up to 144 customer connections. The internal splitter node box is a wall ...



Learn how to install a distribution box safely and correctly. Covers wiring, placement, standards, and expert tips for a compliant setup.

Contact Us

For more information, pricing, or custom solutions, please contact us:

Website: <https://indzawo.co.za>

Email: sales@indzawo.co.za

Phone: +27 71 296 8473

Address: 22 Quantum Street, Midrand, 1685, Gauteng, South Africa

This document is for informational purposes only. Specifications subject to change without notice.

