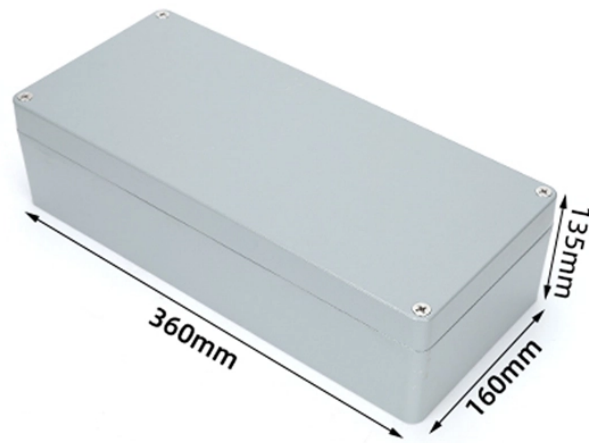
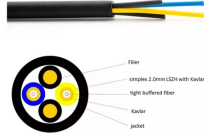


# Standard Requirements for Electrical Distribution Box Suspension



## Standard Requirements for Electrical Distribution Box Suspension



HDPE conduit must be electrical grade, black in color and meet the requirements of NEMA TC7 for each trade size. HDPE conduit is not approved for meter risers or for entering a building.



IEC 60670-21:2024: The Standard for Boxes and enclosures for electrical accessories for household and similar fixed electrical installations - Particular requirements for boxes and enclosures with provision ...



Outlet and junction boxes shall be a minimum of 4 inches square x 2 1/8 inches deep. Use of round boxes shall be avoided where conduit must enter the box through its side. This would result in a ...



Power wires and cables shall be insulated adequately where they pass into or out of electrical compartments. Cables shall enter metal frames of motors, splice boxes, and electrical compartments ...



All customers on the Utility's electric distribution system are occasionally subjected to momentary fluctuations in serving voltage. These are caused by disturbances such as lighting surges and short ...



Only contractors that can demonstrate current qualifications, acceptable materials, and equipment will be allowed to perform construction on these systems. On the job supervisor shall be qualified on ...



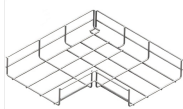
Temporary lights shall not be suspended by their electric cords unless cords and lights are designed for this means of suspension. Portable electric lighting used in wet and/or other conductive locations, as ...



Design requirements for low voltage distribution boxes cover NEC, IEC, and safety standards to ensure reliable, compliant electrical installations.



Complete specification guide for outdoor electrical distribution boxes covering NEC Article 312 requirements, NEMA ratings, sizing calculations, and selection criteria for commercial and ...



The contents of this manual contain minimum requirements used in designing and building a reliable, cost-effective, operable and maintainable distribution system that is to be used in combination with ...

## Contact Us

For more information, pricing, or custom solutions, please contact us:

Website: <https://indzawo.co.za>

Email: [sales@indzawo.co.za](mailto:sales@indzawo.co.za)

Phone: +27 71 296 8473

Address: 22 Quantum Street, Midrand, 1685, Gauteng, South Africa

This document is for informational purposes only. Specifications subject to change without notice.

