

Standard Size of Outdoor Distribution Boxes



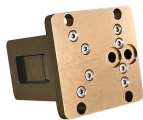
Standard Size of Outdoor Distribution Boxes



Choose from our selection of outdoor electrical boxes, including outlet boxes and covers, weatherproof outlet boxes and covers, and more. Same and Next Day Delivery.



This document provides the technical specifications for an outdoor distribution feeder pillar box to be utilized for MVAC distribution networks.



Choosing the right electrical junction box size is crucial for safety and code compliance in your US projects. This guide helps you determine the correct ...



Upgrade your outdoor power setup with this 4-Way Outdoor Breaker Box, featuring IP65 waterproof protection and a durable PC/ABS plastic enclosure for maximum reliability.



Complete specification guide for outdoor electrical distribution boxes covering NEC Article 312 requirements, NEMA ratings, sizing calculations, and selection criteria for commercial and ...



CommScope wall boxes offer efficient fiber connectivity. Easy installation, versatile sizes, and superior cable management.



Weatherproof outdoor cable distribution boxes with IP65 rating, arc-proof design, and flexible terminations for safe, reliable power distribution up to 10kV.



The IP65 Distribution Box is available in a comprehensive range of sizes, from 4-way to 54-way configurations, to meet a variety of distribution needs. Its rugged IP65 rating further enhances its ...



Discover the OOHMAGE Electrical Distribution Box, a waterproof IP65 distribution board designed for safety and durability. Ideal for homes, offices, and factories. Available in 4 to 54-way models!



Choosing the right electrical junction box size is crucial for safety and code compliance in your US projects. This guide helps you determine the correct dimensions based on wire fill capacity, ...



Upgrade your outdoor power setup with this 4-Way Outdoor Breaker Box, featuring IP65 waterproof protection and a durable PC/ABS plastic enclosure for maximum ...



Learn about control panels, breaker boxes, junction boxes, and custom enclosures. Explore standard panel sizes, applications, and key differences for residential, commercial, and ...

Contact Us

For more information, pricing, or custom solutions, please contact us:

Website: <https://indzawo.co.za>

Email: sales@indzawo.co.za

Phone: +27 71 296 8473

Address: 22 Quantum Street, Midrand, 1685, Gauteng, South Africa

This document is for informational purposes only. Specifications subject to change without notice.

