

Steel Structure Connecting Corridor Cable Support

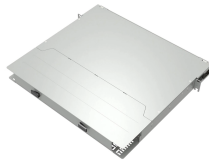




Compared with the prior art, the invention has the advantages of stable stress performance, capability of realizing the conversion between the unidirectional sliding and the bidirectional sliding...



In addition, a cable support system can be used to separate and arrange cables in groups. The systems are installed on ceilings, walls or floors. The material of a cable support system is normally steel or ...



Structural connectors, fasteners, anchoring systems, and construction hardware for wood, cold-formed steel, and mass timber. Trusted by builders since 1956.



Unistrut Midwest can help you design a universal support structure for all trades to connect their pipe, conduits, or cable trays.



Explore the world of cable structure design. Learn about its applications, innovative techniques, and best practices for creating durable and efficient cable-supported structures.



Explore the world of cable structure design. Learn about its applications, innovative techniques, and best practices for creating durable and ...

Contact Us

For more information, pricing, or custom solutions, please contact us:

Website: <https://indzawo.co.za>

Email: sales@indzawo.co.za

Phone: +27 71 296 8473

Address: 22 Quantum Street, Midrand, 1685, Gauteng, South Africa

This document is for informational purposes only. Specifications subject to change without notice.

