

# Structure diagram of voltage relay protection



## Structure diagram of voltage relay protection



In fault conditions, the electrical quantities may change like current, voltage, phase angle & frequency. The protective relay diagram is shown below. A protective relay is used to protect the device once ...



As the core equipment of power grid, relay protection device plays a key role in the safe and stable operation of power grid.



A structure is an arrangement and organization of interrelated elements in a material object or system, or the object or system so organized. Physical structures include artifacts and objects such as ...



The arrangement or interrelation of all the parts of a whole; manner of organization or construction. The structure of the atom, the structure of society.



The maximum distance up to which the voltage is less than the minimum voltage required is known as the dead zone of the directional relay, i.e. if the fault takes place within this zone the relay will not ...



If you structure something, you arrange it in a careful, organized pattern or system. By structuring the course this way, we produce something companies think is valuable. [VERB noun]



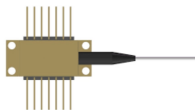
Motor Differential Protection Relay: Motor protection relays detect faults within motors by comparing the current entering and leaving the motor windings. They protect motors from issues like phase ...



The meaning of STRUCTURE is the action of building : construction. How to use structure in a sentence.



As the protected components of the electrical systems have changed in size, configuration and their critical roles in the power system supply, some protection aspects need to be revisited (i.e. the use of ...



STRUCTURE meaning: 1. the way in which the parts of a system or object are arranged or organized, or a system arranged.... Learn more.



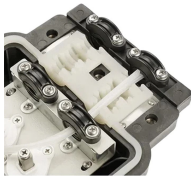
The objective of this presentation is to convey a basic understanding of protective relays to an audience of engineers already familiar with low voltage protective device coordination.



the way or manner in which something is constructed: the structure of the building. the manner in which the elements or parts of anything are organized: the structure of proteins.



Structure refers to the arrangement of and relations between the parts or elements of something complex. It can also denote a system or organization established for a certain purpose.



Prepared by Working Group I5 Working Group Assignment presentation of protection and control relaying. The report will identify methodology behind these practices, present issues ...



There are 17 meanings listed in OED's entry for the noun structure, two of which are labelled obsolete. See "Meaning & use" for definitions, usage, and quotation evidence.



Regardless of the principle involved, relays are generally classified according to the function they are called upon to perform in the protection of electric power circuits.



Electromechanical protective relays at a hydroelectric generating plant. The relays are in round glass cases. The rectangular devices are test connection blocks, ...



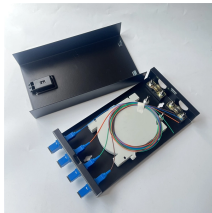
These diagrams are invaluable when designing, installing, or maintaining protection relays, helping engineers to quickly identify problems, diagnose faults, and apply the necessary ...



Under voltage relay is an electromechanical protection device which is used for monitoring and controlling the system voltage according preset voltage.



A structure is something of many parts that is put together. A structure can be a skyscraper, an outhouse, your body, or a sentence. Structure is from the Latin word structura which means "a fitting ...



Children need a lot of structure in their lives. She structured the essay chronologically. The story is structured [= built] around several main themes.

## Contact Us

For more information, pricing, or custom solutions, please contact us:

Website: <https://indzawo.co.za>

Email: [sales@indzawo.co.za](mailto:sales@indzawo.co.za)

Phone: +27 71 296 8473

Address: 22 Quantum Street, Midrand, 1685, Gauteng, South Africa

This document is for informational purposes only. Specifications subject to change without notice.

