

## Swiss Franchise Independent Switch QSFP



### Overview

ABSTRACT: This specification defines the contact pads, the electrical, power supply, ESD and thermal characteristics of the pluggable QSFP+ module or cable plug. The core difference between SFP and QSFP is lane count: SFP is a single-lane form factor (1G-25G), while QSFP aggregates 4 (or more) lanes to reach 40G, 100G, 200G and 400G (QSFP-DD). Choose by port density, target bandwidth, distance, and thermal budget. For access and 5G front-haul pick. Save this search Request a server item Any questions?

Our AI beta will help you find out quickly. Catalyst 2960x-24ps-L LAN Foundation Stackable Layer 2 Switch Consists Of 24 \* 10/100/1000 Ethernet Ports With POE + And 4 \* 1G SFP Plink Interfaces. SFF-8635 QSFP+ 4X 10 Gb/s Pluggable Transceiver Solution (QSFP10) SFF-8685 QSFP+ 4X 14 Gb/s Pluggable Transceiver Solution (QSFP14). In this guide, we break down the differences between these modules and help you make the best decision for your infrastructure—whether you're upgrading a legacy system, increasing the bandwidth of a modern network or building a future-ready data center. - 30 days invoice payment (CH). This transceiver is 100% compatible with all Arista

parts that list QSFP-100G-XSR4 as a supported transceiver.

## Swiss Franchise Independent Switch QSFP



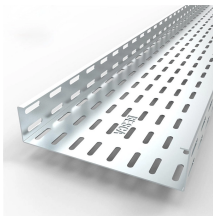
Search Newegg for qsfp network switches. Get fast shipping and top-rated customer service.



QSFP28 supports 4x25G lanes, totaling 100 Gbps. It's the go-to transceiver for 100G Ethernet, offering high density and low power consumption.



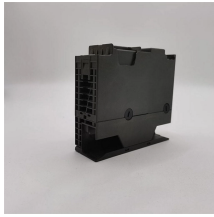
QSFP+ is an enhanced version of SFP designed for higher-speed network requirements. It supports four channels and can handle data rates up to 40 Gbps (4x10 Gbps). QSFP+ is widely ...



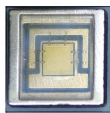
Instead of pushing one lane to extreme data loads, QSFP provided four independent paths of data. Each lane can now run at a comfortable speed, collectively achieving throughput at ...



S7600-48TE4Y2Q, 48-Port Ethernet L3+ Multi-Gigabit Switch, 48x 100M/1000M/2.5GBASE-T RJ45 Ports, with 4x 25G SFP28 and 2x 40G QSFP+ Uplinks, Support MLAG, VXLAN



**ABSTRACT:** This specification defines the contact pads, the electrical, power supply, ESD and thermal characteristics of the pluggable QSFP+ module or cable plug.



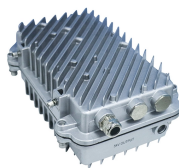
This transceiver is 100% compatible with all Arista parts that list QSFP-100G-XSR4 as a supported transceiver. If you need any help choosing the correct transceiver, please contact our sales team ...



Which brings me to my question - what would be a good option for a small, QSFP switch? I'd probably need two (unless I can snag a QSFP expansion card for Dell N4032f at a decent price) and, to make ...



Compare SFP vs. QSFP transceivers: key differences, speeds, distances, costs, and expert guidance to choose the right module for your network architecture.



July 11, 2019 - QSFP-DD Hardware Specification for QSFP DOUBLE DENSITY 8X PLUGGABLE TRANSCEIVER - Rev 5.0 May 8, 2019 - Common Management Interface Specification - Rev 4.0

## Contact Us

For more information, pricing, or custom solutions, please contact us:

Website: <https://indzawo.co.za>

Email: [sales@indzawo.co.za](mailto:sales@indzawo.co.za)

Phone: +27 71 296 8473

Address: 22 Quantum Street, Midrand, 1685, Gauteng, South Africa

This document is for informational purposes only. Specifications subject to change without notice.

