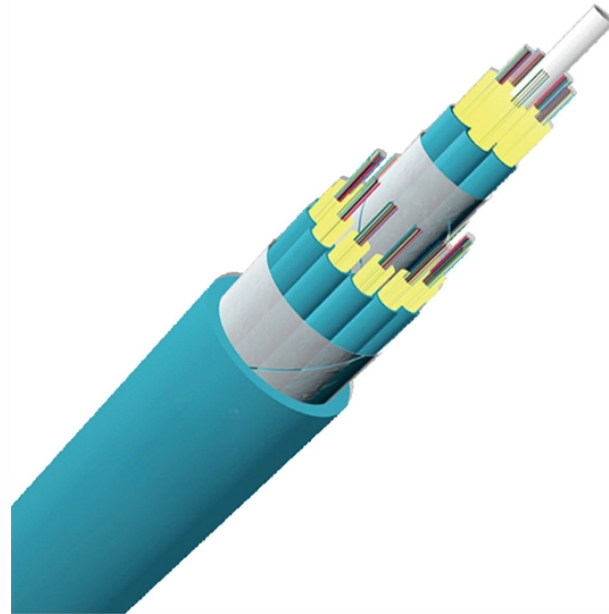


# **T-junction opened on the bottom of the cable tray**



## T-junction opened on the bottom of the cable tray



If trenches contain only one row of cable tray, it is acceptable to have access to the cable tray from the ground level without the need for an excavated access space along the cable tray path.



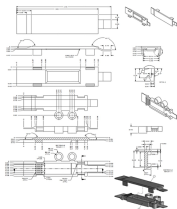
Each tray section should be bonded to an adjoining section using listed bonding jumpers or a continuous ground wire and clamps (such as a copper ground bolt). Powder coated tray requires the removal of ...



This method statement covers the site installation of the cable tray & ladders and the requirements of checks to be carried out.



If it has excellent electrical continuity and is integrated in the installation's equipotential bonding system, a metal cable tray reduces the coupling's impact and thus contributes to good EMC of the electrical ...



The work shall include materials, equipment and apparatus not specifically mentioned herein or noted on the plans but which are necessary to make a complete working ANSI/TIA/EIA and ISO/IEC compliant ...



Learn how to avoid common mistakes in instrumentation cable tray installation. Follow IEC standards and EPC best practices for safe, reliable ...



Ladder tray should be mounted far enough off the floor or roof to allow the cables to exit through the bottom of the tray. If strut is used as a cross support, mount the strut directly to the roof or floor.



The T-branch bracket TKU is pushed inside the cable tray and attached with the included screw set. KRA/KRB cable tray with the bracket TKU attached is then placed on another cable...



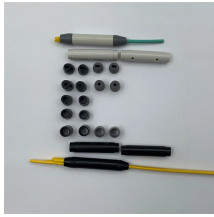
It discusses the uses and types of cable trays, including trough, ladder, solid bottom, channel, single rail aluminum, and wire mesh varieties. The document also covers common cable tray fittings like ...



It should be mounted far enough off the floor or roof to allow the cables to exit through the bottom of the cable tray. If a strut is used for this purpose, mount the strut directly to the floor or roof and attach the ...



Cable tray installed in a hazardous location must contain only those cables that are appropriate for this type of environment as defined in Chapter 5 of the NEC.



To install the cable tray supports, first find the required elevation from the floor to the bottom of the cable tray and establish a level line with a laser or a nylon string.



WBTFORM was pioneered as the only insert to offer the flexibility to simply roll into the tray bottom, and now WBTFORM can cover both vertical sides and bottom to totally encapsulate and protect cabling ...

## Contact Us

For more information, pricing, or custom solutions, please contact us:

Website: <https://indzawo.co.za>

Email: [sales@indzawo.co.za](mailto:sales@indzawo.co.za)

Phone: +27 71 296 8473

Address: 22 Quantum Street, Midrand, 1685, Gauteng, South Africa

This document is for informational purposes only. Specifications subject to change without notice.

