

Tariff Costs for Upgraded Smart Patch Panels for Security Applications



Overview

An official website of the United States International Trade Commission
An official website of the United States International Trade Commission
To meet evolving data center needs, Belden offers an integrated hardware/software solution designed for maximum security, reliability and uptime—the PatchPro® Intelligent Patching Solution. This complete & intelligent-ready physical layer management system uses RFID technology for wireless. SYSTIMAX 360™ GigaSPEED X10D® Evolve High Density Shielded Panels SYSTIMAX PATCHMAX® Panels SYSTIMAX 360™ GigaSPEED X10D® PATCHMAX® GS6 Category 6A U/UTP Patch Panel, 24 port SYSTIMAX 360™ GigaSPEED X10D® PATCHMAX® GS6 Category 6A U/UTP Patch Panel, 48 port SYSTIMAX 360™ GigaSPEED XL®. The Relevance Inspector will open in the Coveo Administration Console. Leviton offers the industry's best global patch panel service and logistics with a wide array of flexible solutions for every application, backed by industry leading service and support. QUICK LINKS: Copper Systems | Data Center. MapIT G2 integrates the powerful combination of innovative Smart Patch Panels, user-friendly Master Control Panels and EagleEye™ software to provide real-time tracking and reporting of

network-wide physical layer activity. Accommodating fully shielded or unshielded cables, these. On February 20, 2026, the President issued Executive Order 14389, "Ending Certain Tariff Actions," which provides that certain additional ad valorem duties imposed under the International Emergency Economic Powers Act (IEEPA) will no longer be collected. The USITC has not yet received further.

Tariff Costs for Upgraded Smart Patch Panels for Security Applications



President Donald Trump's 10% across-the-board tariffs are in jeopardy after a federal court ruled them illegal on Thursday, dealing a second major blow this year to the president's signature ...



A tariff is a tax that governments place on goods coming into their country. You might also hear them called duties or customs duties— trade experts use these terms interchangeably.



A tariff, or import tax, is a duty imposed by a national government, customs territory, or supranational union on imports of goods and is paid by the importer. Exceptionally, an export tax may be levied on ...



This document provides a high-level overview of tariff requirements. The President has imposed new tariffs on imported goods under the International Emergency Economic Powers Act ...



A trade court's ruling this week against a 10% U.S. tariff is narrow in scope, offering limited relief to importers. Here's what to know.



All patch panels are UL certified, RoHS compliant and can be used with both 110 and Krone punch-down tools. They are backed by our Lifetime Warranty. Cat5e, Cat6 and Cat6a by Intellinet. Free shipping ...



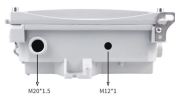
View the latest U.S. tariff rates by country, including 2025-2026 changes, Section 122 updates, and evolving policies impacting global trade.



CommScope offers Intelligent Copper Panels for automated infrastructure management solutions that enable you to monitor, manage and optimize your network connectivity in real time



Please view our full RLH price list and contact us at info@fiberopticlink if you have any questions or special project needs.



Accommodating fully shielded or unshielded cables, these easy-to-assemble Patch Panels can be ordered with or without patching switches and with or without provisions for RiT's PatchView™ system.



Leviton offers the industry's largest selection of high-quality copper and fiber optic patch panels to support the latest technologies and provide ideal configurations for unique applications.



The Harmonized Tariff Schedule of the United States (HTS) sets out the tariff rates and statistical categories for all merchandise imported into the United States.



The tariff resources listed (public and private) are not exhaustive; however, they can help you estimate tariff rates for your shipment. Remember that the actual tariff rates will be determined by the ...



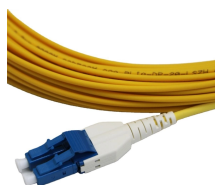
Get instant insights on how tariffs affect your imports. Search by product name or upload HTS codes to see real-time duty calculations. Tariff Simulator is provided for general informational ...



A federal court on Thursday concluded that President Donald Trump's global 10% tariffs are unlawful, a decision that the Department of Justice quickly appealed. In a 2-1 decision, a panel of ...



On February 20, 2026, the President issued Executive Order 14389, "Ending Certain Tariff Actions," which provides that certain additional ad valorem duties imposed under the International Emergency ...



The unique advantage of such a solution is the knowledge of all states at the patch panel ports of the entire physical layer in the network. According to the Gartner study, where 30% of all network failures ...



A tariff is a tax imposed by one country on the goods and services imported from another country to influence it, raise revenues, or protect competitive advantages.



This complete & intelligent-ready physical layer management system uses RFID technology for wireless detection of individual patch cords & real-time monitoring of unintended physical changes in network ...



MapIT G2 integrates the powerful combination of innovative Smart Patch Panels, user-friendly Master Control Panels and EagleEye™ software to provide real-time tracking and reporting of network-wide ...

Contact Us

For more information, pricing, or custom solutions, please contact us:

Website: <https://indzawo.co.za>

Email: sales@indzawo.co.za

Phone: +27 71 296 8473

Address: 22 Quantum Street, Midrand, 1685, Gauteng, South Africa

This document is for informational purposes only. Specifications subject to change without notice.

