

Temporary Distribution Box Circuit Diagram Level 1



Temporary Distribution Box Circuit Diagram Level 1



View and Download Hubbell SPIDER II installation and operating instructions manual online. Temporary branch power distribution unit with ground fault protection for personnel. SPIDER II industrial ...



The CEP temporary power distribution unit is designed to be used on a grounded electrical supply system. It will not operate when supplied from a power source which is not grounded.



When connecting to a 3-Phase 5-Wire System, a temporary power distribution box must be utilized (6606GUSF-256 for example) to connect the 2 hots and neutral legs properly, then the box will ...



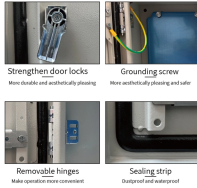
Learn how to wire a temporary power pole with a detailed wiring diagram for easy installation and setup.



These installation and operating instructions apply to the following SPIDER II temporary power branch distribution system components. Do not discard these instructions, save for future reference.



This document provides a list of components in an electrical distribution box with their names and associated wiring diagrams. It includes tables of diodes, fuses, relays, and other components like ...



Securely manage job site power. Build a compliant temporary distribution box, detailing component sizing, critical grounding, and wiring integrity.



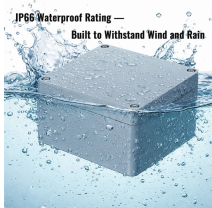
Power distribution substation should never be operated without access covers securely mounted in place. A safety program must be established, verified and followed by all personnel involved with the ...



This standard addresses temporary generator requirements resulting from outages on the BWI Marshall distribution system from the utility service entrance locations down to and including the BWI Marshall ...



All 120-volt, single-phase, 15- and 20-ampere receptacles shall be of the grounding type and their contacts shall be grounded by connection to the equipment grounding conductor of the circuit ...



This document provides a list of components in an electrical ...

LoRa handheld portable base station



These installation and operating instructions apply to the following SPIDER II temporary power branch distribution system components. Do not discard these instructions, save for future reference.

Contact Us

For more information, pricing, or custom solutions, please contact us:

Website: <https://indzawo.co.za>

Email: sales@indzawo.co.za

Phone: +27 71 296 8473

Address: 22 Quantum Street, Midrand, 1685, Gauteng, South Africa

This document is for informational purposes only. Specifications subject to change without notice.

