

The aggregation switch shows fast network speed



Overview

Compared to access switches, aggregation switches typically offer higher performance, faster port speeds, and more powerful processing capabilities. 3ad link aggregation enables you to group Ethernet interfaces to form a single link layer interface, also known as a link aggregation group (LAG) or bundle. The Pro Aggregation does this with it's SFP28 25Gbps ports. The regular Aggregation switch is best used to connect all devices in a rack. An aggregate switch is a high-capacity network switch that consolidates connections from multiple access switches, acting as a central point for managing network traffic and providing enhanced bandwidth capabilities. It is essential for larger networks requiring efficient data flow. You may also. Its 2.



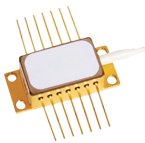
The aggregation switch shows fast network speed



An Aggregation or "Top-of-Rack" switch is designed to connect everything in a rack at high speeds, then have an even bigger pipe out to the rest of the network.



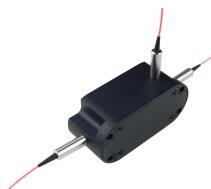
An aggregate switch is a high-capacity network switch that consolidates connections from multiple access switches, acting as a central point for managing network traffic and providing ...



By combining traffic from multiple access switches, aggregation switches maximize bandwidth usage and ensure high-speed, reliable connectivity for all devices on the network.



This aggregation increases overall bandwidth and improves network reliability by allowing traffic to be shared across various links, while presenting a single connection to the network.



Its 2.5Gbps speeds across all ports mean you get near-gigabit performance, perfect for smooth streaming and fast file sharing. The static link aggregation mode enables up to 5Gbps ...



An aggregation switch enhances network performance in the access layer by reducing the number of direct connections between access switches and network servers.



Link Aggregation Group (LAG) You configure a LAG by specifying the link number as a physical device and then associating a set of interfaces (ports) with the link. All the interfaces must have the same ...



Understand how link aggregation (LACP, MLAG, static vs dynamic) improves bandwidth and redundancy. Learn configuration steps on Cisco and Huawei switches and best practices for ...



Link aggregation is a method of joining multiple network connections in parallel to create a single, high-capacity logical link. Network administrators typically use this technique to increase backbone ...



Thus, it consolidates L2 traffic in a high-speed packet switching fabric and provides a platform for network-based services at the interface between L2 and L3 in the data center. This ...

Contact Us

For more information, pricing, or custom solutions, please contact us:

Website: <https://indzawo.co.za>

Email: sales@indzawo.co.za

Phone: +27 71 296 8473

Address: 22 Quantum Street, Midrand, 1685, Gauteng, South Africa

This document is for informational purposes only. Specifications subject to change without notice.

