

## The distribution box can't be installed



### Overview

Quality inspection: Make sure the distribution box and its components meet the standards, check whether the wiring is firm, and whether the materials are qualified. It takes the incoming power and safely distributes it to different circuits throughout your building. Let's see what factors need to be taken care of when choosing the installation place. Accessibility is one of the most. If you just installed your own new electrical box, and things aren't working properly, it's not fun. This article will explore some common problems of distribution boxes in depth, in order to provide reference. How to solve and prevent the failure of the distribution box during construction and installation?

During the construction and installation process, the methods to solve and prevent the failure of the distribution box include: Quality inspection: Make sure the distribution box and its components. Whether in a wireway or any other box, power distribution blocks installed on the line side of the service equipment shall be listed and marked "suitable for use on the line side of service equipment" or equivalent.

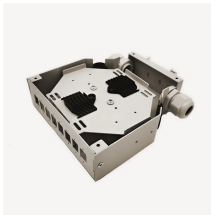
## The distribution box can t be installed



Learn how to install a distribution box safely and correctly. Covers wiring, placement, standards, and expert tips for a compliant setup.



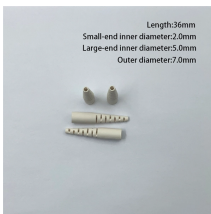
In this guide, I have discussed ten of the common problems with a septic tank distribution box (D-box) and how to fix them. 1. Clogging. If you've had your septic system for a while, you have ...



In short, the installation of Electrical Distribution Boxes must comply with relevant specifications, and operators must have certain electrical knowledge and safety awareness to ensure the safe and ...



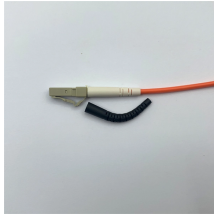
Distribution Box Installation: Put the distribution box on the installation surface, and align the position of the expansion bolts and tighten the screws. This step needs to be checked carefully, ...



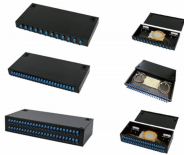
Be sure that the power distribution box has sufficient power provided to it. Long cable runs can result in a voltage drop, which can be solved by using a heavy gauge wire. Check wires/DIN terminal clasps ...



During the construction and installation process, the methods to solve and prevent the failure of the distribution box include: Quality inspection: Make sure the distribution box and its components meet ...



Location Restrictions: Electrical panels (main and subpanel) cannot be installed in bathrooms or closets (240.24 - E and D), inside cabinets, above shelving, or or close to sump pump holes. Proper lighting ...



The main problems encountered with distribution boxes include installation and layout problems, electrical connection and grounding problems, maintenance and care problems, ...



If you just installed your own new electrical box, and things aren't working properly, it's not fun. The good news is that most issues are easy to troubleshoot, especially if you follow the steps ...



Code Change Summary: New requirements were added about the listing of power distribution blocks. Power distribution blocks are most commonly used in metal wireways (covered in Article 376) but ...

## Contact Us

For more information, pricing, or custom solutions, please contact us:

Website: <https://indzawo.co.za>

Email: [sales@indzawo.co.za](mailto:sales@indzawo.co.za)

Phone: +27 71 296 8473

Address: 22 Quantum Street, Midrand, 1685, Gauteng, South Africa

This document is for informational purposes only. Specifications subject to change without notice.

