

## The electrical distribution box at the construction site lacks a grounding wire



### Overview

148 (Grounding Conductor): Requires metallic junction boxes—and by extension, cabinet doors—to bond to ground using a designated grounding screw or clip. When properly done, current from a short or from lightning follows this path, thus preventing the buildup of voltages that would. California's 2025 electrical code sets clear grounding and bonding rules for service equipment, solar systems, pools, and more. California's grounding requirements come from the 2025 California Electrical Code (CEC), which took effect January 1, 2026, and applies to all new electrical installations. The EGFCP helps operate devices such as circuit breakers and fuses or ground-fault detectors in ungrounded systems. Why is it so important to ensure you have proper grounding and bonding for your electrical system?

First and foremost is the safety of personnel within a building. We'll blend insights from field experiences and code requirements to give you clarity you can actually apply—no technical jargon fluff. Which circuit conductor must be

grounded. The characteristics of the.

## The electrical distribution box at the construction site lacks a ground



There are a few errors commonly seen in design or during construction due to a lack of understanding or misconception concerning grounding, bonding and the NEC Article 250.



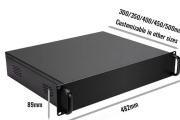
The grounding electrode system (GES) creates the physical connection between your building's electrical system and the earth. This connection limits voltage from lightning and line ...



There is one disadvantage to grounding: a break in the grounding system may occur without the user's knowledge. Using a ground-fault circuit interrupter (GFCI) is one way of overcoming grounding ...



This is the grounding electrode system. There are some electrodes that are part of the building construction and others that must be installed. Either way, the NEC requires all electrodes present ...



The arrangement of the electric system must prevent objectionable currents from flowing through the grounding and bonding paths. Grounding and bonding equipment must be adequately ...



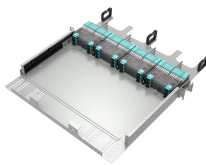
If you've ever found yourself scratching your head over whether that metal door on your distribution cabinet really needs a grounding wire, you're not alone. In factories, construction sites, ...



Ensuring the proper grounding and bonding of the electrical system could very well be the reason an employee within the building avoids an unintended shock and can go home that night.



Try to visualize the utility neutral conductor as a white wire with green stripes on it. That's really what it is; the service neutral wire carries the unbalanced return (white) and it's the fault-clearing conductor ...



The National Electrical Code does not treat grounding and bonding as parallel checklists. It treats them as a coordinated safety architecture that determines whether protective devices operate correctly ...

## Contact Us

For more information, pricing, or custom solutions, please contact us:

Website: <https://indzawo.co.za>

Email: [sales@indzawo.co.za](mailto:sales@indzawo.co.za)

Phone: +27 71 296 8473

Address: 22 Quantum Street, Midrand, 1685, Gauteng, South Africa

This document is for informational purposes only. Specifications subject to change without notice.

