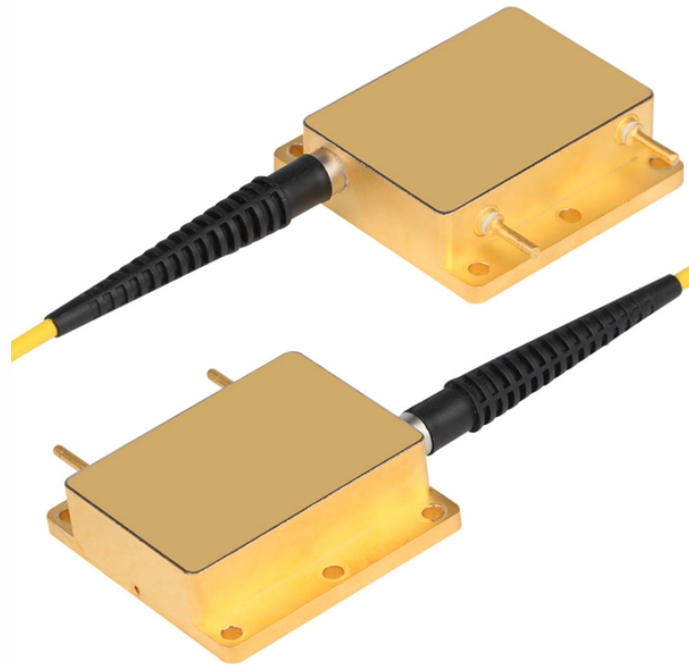


Three-level distribution box two horsepower



Three-level distribution box two horsepower



Three-phase control panels are engineered to manage and monitor submersible pump stations with precision, making them ideal for high-demand environments like lift stations, wastewater treatment ...



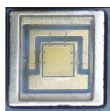
Supports 2HP to 3HP three phase water pumps running on 3-phase 230V. It is NOT an inverter. Features a full automatic mode with water level probes and manual mode. Model: TCP30T230. More ...



* Automatically controlling the motor by the probes' signal according to the water level in the well or in the cistern, or by other pilot device if used. * Connection Terminals accept up to #4 AWG wire



Shop the Franklin Electric 2 HP 230 V 3-Wire Control Box at Dean Bennett Supply. UL-listed with heavy-duty terminals, overload reset access, and outdoor-ready enclosure—designed for reliable ...



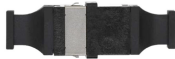
As for the equipment inside, there are certain differences: the first level distribution cabinet generally has isolation switches, circuit breakers, leakage protectors, etc., the second level ...



The TEI Controls Duplex Lift Station Control Panel provides the electrical equipment required to operate a 2-pump lift station having motors of up to 25 horsepower at 460 volts 3-phase.



Little Giant® Standard Control Box, 2 hp, 60 Hz, 230 V AC, 1 ph, 3 Wire Cord Standard and Deluxe boxes are for 1 hp to 15 hp 1-phase water systems that use standard/heavy-duty pressure switches, ...



* Automatically controlling the motor by the probes" signal according to the water ...



LEVEL CONTROL: Includes Qty. 4, normally open, mechanical, pilot duty, narrow angle, 5 Amp @ 120/240 VAC, Floats with 15 Ft. 16/2, SJOW cords and external weight.



As a result, server enclosures are requiring more power than ever before and demanding effective, efficient power distribution, which is essential to managing power capacity.



For higher flow rate systems, M-Tech Control's three phase duplex control panel offers dependable control of dual pump applications across a multitude of industries.

Contact Us

For more information, pricing, or custom solutions, please contact us:

Website: <https://indzawo.co.za>

Email: sales@indzawo.co.za

Phone: +27 71 296 8473

Address: 22 Quantum Street, Midrand, 1685, Gauteng, South Africa

This document is for informational purposes only. Specifications subject to change without notice.

