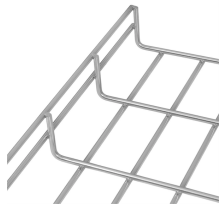


Typical dimensions of power distribution boxes in computer rooms



Typical dimensions of power distribution boxes in computer rooms



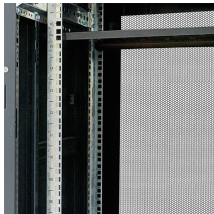
From residential 100-amp panels to massive 600 amp main distribution panels in commercial facilities, this comprehensive guide will help you understand distribution board types, ...



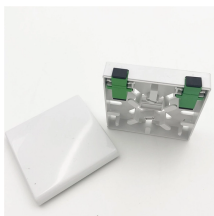
Increasing rack power density both in the data center and at the network edge means that reliable power distribution is crucial. Our innovative power distribution units and rack PDUs not only maintain power, ...



Electrical enclosure sizes are not universal, but most manufacturers follow common size families. This guide explains typical wall-mount and floor ...



Learn standard electrical box dimensions for outlets, switches, and junction boxes. Compare sizes, depths, volume, and clearance for safe installations.



Design of Electrical Distribution Panel - Free download as PDF File (.pdf), Text File (.txt) or read online for free. This document outlines the design and functionality of electrical distribution panels, detailing ...



Standard Power Distribution Units (PDU) Power distribution units (PDU) are used to distribute electric power to racks of computers, switches and networking equipment.



Figure 1 provides a block diagram of an electrical distribution system showing the name and the typical location of the electrical distribution equipment in a data center and the power flow path.



Power switches and wiring should be positioned at the rear. The rear width of the cabinet should be at least 1.5 m, and the insulated base should be 2.3 m above the ground.



Still, understanding the standard measurements helps you plan your layout and avoid surprises. Here's a quick table showing typical single gang box sizes: ... For large electrical power ...



The guidance provided in this document enables informed decision-making, resulting in reliable, efficient, and scalable power distribution solutions tailored to specific operational requirements.



This guide explores control panels, electrical boxes, breaker panels, bus bars, junction boxes, and custom enclosures to help you understand their sizes, types, and common applications.



Power Distribution Equipment is a term generally used to describe any apparatus used for the generation, transmission, distribution, or control of electrical energy.

Contact Us

For more information, pricing, or custom solutions, please contact us:

Website: <https://indzawo.co.za>

Email: sales@indzawo.co.za

Phone: +27 71 296 8473

Address: 22 Quantum Street, Midrand, 1685, Gauteng, South Africa

This document is for informational purposes only. Specifications subject to change without notice.

