

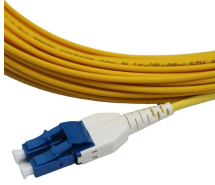
Uses of Fiber Optic Single-Mode Modules



Overview

In this guide, I'll walk you through the main features, benefits, and things to watch out for with SFP Single Mode Fiber modules—so you'll have all the info you need to make smarter choices for your network setup. SFP (Small Form-factor Pluggable) transceivers are essential components in modern fiber optic networks, enabling network devices such as switches, routers, and servers to transmit and receive data over optical fiber. By converting electrical signals into optical signals—and vice versa—SFP. In fiber-optic communication, a single-mode optical fiber, also known as fundamental- or mono-mode, is an optical fiber designed to carry only a single mode of light - the transverse mode. These differences determine which transceivers work with which fiber and how far signals can travel. Understanding the compatibility. Small Form-factor Pluggable (SFP) fiber modules are a popular solution for scalable, flexible networking, offering hot-swappable, point-to-point connections across data centers, campuses, and enterprise networks. Generally, single mode cable has a narrow core diameter of 8 to 10 μm (micrometers), which can propagate at the wavelength of 1310nm and 1550nm.

Uses of Fiber Optic Single-Mode Modules



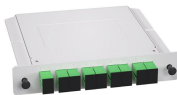
SFP single mode fiber modules are essential components for achieving high-speed connectivity in modern networking environments. One of the key features of these modules is their ...



There are a number of special types of single-mode optical fiber which have been chemically or physically altered to give special properties, such as dispersion-shifted fiber and nonzero dispersion ...



Learn how single-mode and multi-mode transceivers differ, compatibility rules, testing tips, and best practices for reliable fiber deployments.



Types of optical fibers, their applications and future trends is the topic of this blog article. Optical fibers are among the most transformative technologies in modern photonics, quietly enabling ...



Learn what a single mode SFP transceiver is, how it works, key specs, common types, and real-world use cases for long-distance fiber optic networks today.



Single Mode Fiber Optic Transceivers are vital components in modern data transmission. They enable high-speed, long-distance communication over fiber optic cables, supporting everything...



Modes of light can only propagate through single mode fiber optic cables due to their small core diameters. As a result, the amount of light reflection that occurs as light passes through ...



Single mode fiber optic technology has become an indispensable part of modern communication infrastructure. Its ability to transmit data over long distances with high bandwidth and ...



What is an SFP Fiber Module? An SFP (Small Form-factor Pluggable) fiber module is a compact transceiver that converts electrical signals into optical signals (and vice versa) for fiber-optic ...



Whether you are an IT specialist, a network manager, or just a curious individual interested in the technology that interconnects the world, knowing single-mode fiber is fundamental. ...



Overview
Characteristics
History
Connectors
Fiber optic switches
Quadruply clad fiber
External links

Contact Us

For more information, pricing, or custom solutions, please contact us:

Website: <https://indzawo.co.za>

Email: sales@indzawo.co.za

Phone: +27 71 296 8473

Address: 22 Quantum Street, Midrand, 1685, Gauteng, South Africa

This document is for informational purposes only. Specifications subject to change without notice.

