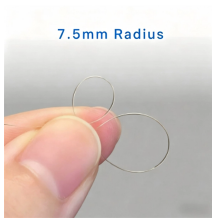


## Voltage of the household distribution box



## Voltage of the household distribution box



In a typical North American home, the power delivered to your breaker box is split into two “hot” wires, L1 (Line 1) and L2 (Line 2). Each of these lines carries 120 volts of alternating current (AC) and is ...



Master power distribution panels with our complete guide covering electrical distribution boards, 3 phase consumer units, panel sizing from 100A to 600 amp main distribution panels, and ...



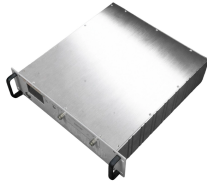
A detailed guide on how to wire a 100 amp breaker box with a wiring diagram. Learn the step-by-step process and necessary tools for a successful installation.



Throughout the house, one hot wire and one neutral wire power conventional 120-volt lights and appliances. Both hot wires and the neutral wire make a 240-volt circuit for large appliances ...



The main electrical panel, commonly called the breaker box, is the central distribution point for all power inside the home. The main service disconnect feeds the panel's two main bus ...



When dealing with residential electricity, understanding the differences between 110V, 120V, and 240V is crucial for both safety and ...



A detailed guide on how to wire a 100 amp breaker box with a wiring diagram. Learn the step-by-step process and necessary tools for a successful installation.



Due to line drops, the actual voltage into your home will vary with the distance from the transformer on the pole. It may be several volts above 120 if close, and as low as 107 if some ...



When dealing with residential electricity, understanding the differences between 110V, 120V, and 240V is crucial for both safety and functionality. Here's a breakdown:



Basic household voltage in the US is 120V/240V, whereas most IEC countries, including the UK, EU, AUS, and NZ, use a simple 230V single phase and 400-415V three-phase voltage for domestic and ...



Explore a comprehensive guide to residential electric meter box wiring diagrams, offering clear instructions for safe and efficient installation.



In the United States and Canada, the electrical power supplied to most homes is a split-phase system. That power enters your home at about 240 volts. This 240 volts is split at the main circuit breaker ...

## Contact Us

For more information, pricing, or custom solutions, please contact us:

Website: <https://indzawo.co.za>

Email: [sales@indzawo.co.za](mailto:sales@indzawo.co.za)

Phone: +27 71 296 8473

Address: 22 Quantum Street, Midrand, 1685, Gauteng, South Africa

This document is for informational purposes only. Specifications subject to change without notice.

