

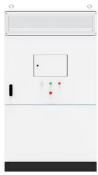
Voltage provided by the PoE switch



Voltage provided by the PoE switch



IE3100 PoE integrates a boost power supply that can take 12V or 24V to create 54V for PoE applications. The IE3100 can provide PoE power from 9.6V to 60V. For more information, see ...



Based on the PoE standards, the voltage for PoE typically delivers 48 volts (V) of direct current (DC) over Ethernet cables. This PoE voltage level is reliable and high enough to minimize ...



The output voltage of each PoE interface of a standard PoE Switch is a typical value of 48V; non-standard POE switches are 48V, 24V, 12V, 5V, etc. The PoE interface can work in two standards, ...



Learn about PoE switch voltage outputs, including standard 48V (IEEE 802.3af/at/bt) and options like 24V/12V. Discover why 48V is preferred for industrial use, compatibility, and selection tips.



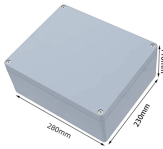
The original IEEE 802.3af-2003 PoE standard voltage specifies supplying between 44 and 57 Volts DC over Ethernet, with a maximum power output of 15.4 Watts (W) per port.



Power over Ethernet is injected onto the cable at a voltage between 44 and 57 ...



PoE uses a DC voltage injected through “phantom power” on the same wire pairs or spare pairs, depending on the mode (A/B/4-pair). Ethernet signaling is AC-based and differential, so ...



By default, all switch ports are in PoE mode auto, which means that if the interface detects that PD is connected, it automatically starts providing power. This can be checked using the show power inline ...



Explore PoE wattage, IEEE standards, and power sourcing tips. Learn how to select the right PoE setup for reliable, future-ready network performance.



Power over Ethernet is injected onto the cable at a voltage between 44 and 57 volts DC, and typically 48 volts is used. The amount of power contained in PoE is the amount of power injected by the PoE ...



Passive PoE switches/adapters are mainly divided into 12V, 24V, and 48V according to the output voltage provided. When purchasing a passive PoE switch/adaptor, you need to consider ...

Contact Us

For more information, pricing, or custom solutions, please contact us:

Website: <https://indzawo.co.za>

Email: sales@indzawo.co.za

Phone: +27 71 296 8473

Address: 22 Quantum Street, Midrand, 1685, Gauteng, South Africa

This document is for informational purposes only. Specifications subject to change without notice.

