

What are the functions of a relay protection box



Overview

It functions as part of a coordinated protection system that includes sensors, control wiring, and interrupting devices. A protection relay is a crucial component of electrical systems that safeguard infrastructure, employees, and equipment from electric problems and malfunctions. The protected zone is defined and limited by different things depending on the protection function. In other words, the prime function of protective relays is the timely and. This handbook covers the code of practice in protection circuitry including standard lead and device numbers, mode of connections at terminal strips, colour codes in multicore cables, dos and donts in execution. RPA automatically detect faults and emergency situations, then take action to disconnect the damaged section of the network to protect equipment and ensure stable and reliable power supply.

What are the functions of a relay protection box



Relay protection The objective of relay protection is to quickly isolate a faulty section from both ends so that the rest of the system can function satisfactorily.



Protection is needed to detect electrical faults and abnormal operating conditions. Protection is also needed for protecting people and property around the power network. The protected zone is the part ...



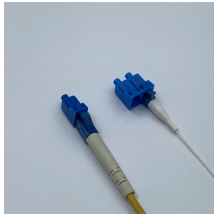
Protection relays have a crucial role in maintaining the safety, reliability, and integrity of electric networks. They recognize problems before they become serious. This decreases the ...



SIPROTEC leads the way in integrating protection, control, measurement, and automation functions in one device. Secure your grid with SIPROTEC 5 - the benchmark



Protection relays are indispensable components of modern power systems, ensuring the reliability, safety, and stability of electrical networks. These devices detect abnormal operating ...



Relay protection The objective of relay protection is to quickly ...



Relay protection and automation (RPA) are critical systems in electrical networks. RPA automatically detect faults and emergency situations, then take action to disconnect the damaged ...



A protective relay is basically an electrical device that detects a fault in a power system and initiates the operation of the circuit breaker to isolate the defective section or component from ...



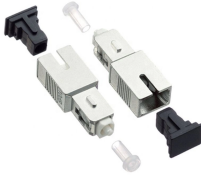
Learn what is voltage protection relays, their functions, types, & applications in safeguarding electrical systems from voltage fluctuations and faults.



A microprocessor-based digital protection relay can replace the functions of many discrete electromechanical instruments. These relays convert voltage and currents to digital form and process ...



Protective relays play a crucial role in power system protection, ensuring safety, reliability, and continuity of electrical supply. From traditional electromechanical relays to modern ...



It functions as part of a coordinated protection system that includes sensors, control wiring, and interrupting devices. The relay receives scaled electrical signals from current and voltage ...

Contact Us

For more information, pricing, or custom solutions, please contact us:

Website: <https://indzawo.co.za>

Email: sales@indzawo.co.za

Phone: +27 71 296 8473

Address: 22 Quantum Street, Midrand, 1685, Gauteng, South Africa

This document is for informational purposes only. Specifications subject to change without notice.

