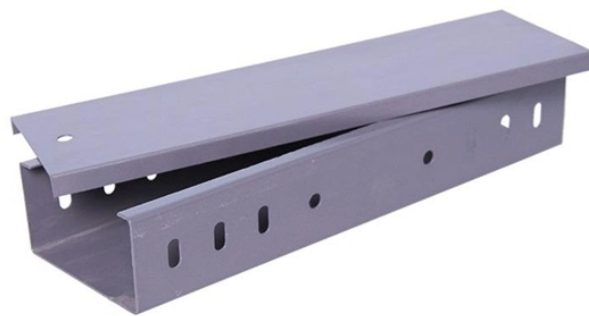


## What does the t in cable management rack represent



### Overview

Strain relief bar (SRB) is a cable management solution, which in most cases, attaches to the back of the rails via the strain relief bar brackets. Engineered to the industry-standard 19" width, this panel seamlessly integrates into various rack setups, enclosure, server or network cabinets, aiding in the efficient. Device Level Ring (DLR) is an EtherNet/IP/TM protocol that is defined by ODVA. DLR provides a means to detect, manage, and recover from single faults in a ring-based network. A DLR network includes the following types of ring nodes. DLR network requires at least one node to be configured as ring. ProX T-P3BR 3U Rack Panel Brush Cable Management Slot Strips for standard 19-Inch Cabinet offers a practical solution for organizing cables within rack systems. Cable holders are best when you frequently need to access or move your cable. The information in this publication is provided "as is.

## What does the t in cable management rack represent



The 19" 3U Cable Management Panel with Brush Strips stands as a practical accessory, aiding in efficient cable organization within rack systems without compromising on durability or functionality.



Choose from our selection of cable holder T slots, including T-slotted framing rails, T-slotted framing structural brackets, and more. Same and Next Day Delivery.



A trunk cable is a pre-terminated fiber or copper cable that combines multiple individual cables into a single bundled unit. It's built to carry multiple data channels between key infrastructure points.



(1) Device 1 represents the primary DLR DHCP server and is not configurable. Because device 4 does not have an entry in the DHCP table, the DHCP server does not provide an IP address for that device.



Engineered to the industry-standard 19" width, this panel seamlessly integrates into various rack setups, enclosure, server or network cabinets, aiding in the efficient management of cables.



With Dell EMC Rack Integration and other Dell EMC PowerEdge Server Configuration Services, you save time by receiving your systems racked, cabled, tested, and ready to integrate into the data center.



Engineered to the industry-standard 19" width, this panel seamlessly integrates ...



Rail depth represents the minimum depth of the rail as measured from the rack front mounting posts when the rail rear bracket is positioned all the way forward.



As a general practice for rack mounted equipment, the contractor shall run power cables, control cables, and high-level cables on the left side of an equipment rack as viewed from the rear.



In this article, we'll explain what we mean by the term "rack and stack" before delving into the detail to give you a brief guide to how the ...



The vertical cable manager (finger duct with cover) is six feet (1.8 meters) high and split into two three-foot (0.9-meter) sections to allow for multiple installation options.



The 19" 3U Cable Management Panel with Brush Strips stands as a practical accessory, aiding in efficient cable organization within rack systems without ...



Generally, intra-rack cabling is not bundled before installation and given the variables of rack cable management it must be left to the installer to determine whether to begin at the switch end of the ...

## Contact Us

For more information, pricing, or custom solutions, please contact us:

Website: <https://indzawo.co.za>

Email: [sales@indzawo.co.za](mailto:sales@indzawo.co.za)

Phone: +27 71 296 8473

Address: 22 Quantum Street, Midrand, 1685, Gauteng, South Africa

This document is for informational purposes only. Specifications subject to change without notice.

