

## What is multimode optical fiber



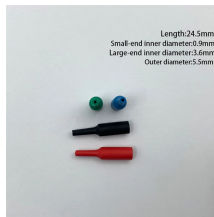
## What is multimode optical fiber



Multimode fiber is a type of fiber optic cable with a relatively large core, typically 50 or 62.5 micrometers in diameter, that allows light to travel along multiple paths simultaneously.



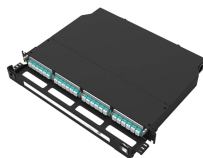
Compare OM1, OM2, OM3, OM4, and OM5 multimode fiber specs, distances, bandwidth, and applications. Essential guide for data center fiber ...



Compare OM1, OM2, OM3, OM4, and OM5 multimode fiber specs, distances, bandwidth, and applications. Essential guide for data center fiber selection.



Multimode fiber optic cables are engineered with a larger core diameter—typically 50 or 62.5 microns—compared to single mode fibers, and they are terminated with various fiber optic ...



Multimode fiber is a type of fiber optic cable with a relatively large core, typically 50 or 62.5 micrometers in diameter, that allows light to travel along multiple paths simultaneously.



Understanding the differences between single-mode, multimode, and specialty optical fibers, along with their manufacturing constraints and emerging applications, is essential for ...



Multimode fiber optics provides many benefits for organizations that require high-speed networking and data transfer capabilities. Multimode can transmit Ethernet and internet protocols in ...



A complete guide to multimode fiber types OM1, OM2, OM3, OM4, and OM5. Compare speed, distance, bandwidth, and applications, and learn how to choose.



Multimode fiber (MMF) is an optical fiber designed to carry multiple light propagation paths—or modes—simultaneously. This is made possible by its relatively large core diameter, ...



The definitive guide to fiber modes. See how core size determines light path, bandwidth, distance limits, and cost in modern optics.



What are multimode fibers and their typical characteristics? What are the basic specifications of a multimode fiber? What are the conditions for efficiently launching light into a multimode fiber? What ...



Multi-mode optical fiber is a type of optical fiber mostly used for communication over short distances, such as within a building or on a campus. Multi-mode links can be used for data rates up to 800 Gbit/s.

## Contact Us

For more information, pricing, or custom solutions, please contact us:

Website: <https://indzawo.co.za>

Email: [sales@indzawo.co.za](mailto:sales@indzawo.co.za)

Phone: +27 71 296 8473

Address: 22 Quantum Street, Midrand, 1685, Gauteng, South Africa

This document is for informational purposes only. Specifications subject to change without notice.

