

## What is the minimum installation height for the distribution box



### Overview

Follow height rules when installing a distribution box. Wall-mounted boxes should be 4. What is the standard height for a wall-mounted distribution box?

What factors should you consider when choosing the installation height?

What happens if the distribution box is installed too low?

What tools do you need to measure the correct height?

What are the risks of not following height. Choose the right box based on environment (indoor/outdoor), load capacity, and durability. Check for proper IP/NEMA ratings and material quality. Ensure safe placement: install in dry, accessible areas with good ventilation and at appropriate height (typically ~1. Practice good wiring: secure. The National Electrical Code provision 110. 26 clarifies that electrical boxes must be supplied with at least 3 feet of free space surrounding them for safety measures. To be specific, the rule book outlines that breaker panels must have at least a clear lateral working space

in order to prevent any. Clearance: Electrical panels must be installed in a readily accessible area with a minimum clearance of 30 inches (762 mm) wide, 3 ft (36 inches or 914 mm) deep, and 6.5 feet ( $\approx$  2 meter) high in front of the panel. The panelboard's door (hinged cover) shall be able to be opened to a full 90°. The National Electrical Code (NEC) requirements might seem like bureaucratic. The code specifies the minimum box size you will need for different wire sizes and the minimum volume size of the box required for different numbers of conductors. For example, a box that contains three to six conductors requires a minimum volume of 18 cubic inches, while a box that contains seven.

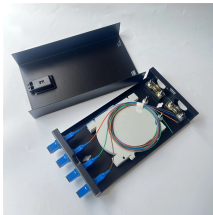
## What is the minimum installation height for the distribution box



Breaker boxes running a voltage of 0-150 volts must have a minimum height of at least 36 inches from the ground. For higher capacity voltage breaker boxes, the panel itself should follow the ...



Standard wall receptacle height is 1 foot from the top of the flooring to the bottom of the receptacle box, or 16 inches to the top of the box. Standard wall switch height is 4 feet from the top of ...



The box has to allow a 90-degree opening of equipment doors. The required height of the working space is determined by the voltage of the equipment that is being installed.



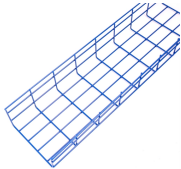
The proper installation of a distribution box involves placing it at the right height to ensure safety and convenience. Mounting it 4.5 to 5.5 feet (1.4 to 1.7 meters) high makes it easily accessible without ...



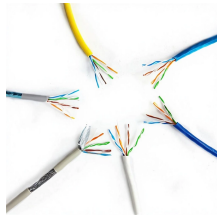
In this installation, no circuit breaker (in its highest position) is more than 6 feet, 7 inches above the floor. Therefore, this installation complies with 404.8 (A).



The latest NEC updates prioritize adaptive solutions for modern energy demands. With homes now packing solar arrays, EV chargers, and smart-home systems, distribution boxes work harder than ...



If the height of the electrical equipment is less than 6.5 feet, but when mounted, the top of the equipment exceeds 6.5 feet, the minimum workspace height shall be equal to the height of the equipment.



Breaker boxes running a voltage of 0-150 volts must have a minimum height of at least 36 inches from the ground. For higher capacity voltage breaker boxes, the panel itself should follow the ...



Determine the precise, code-compliant height for mounting your electrical panel, including crucial working space and location restrictions.



A standard height of 6'7" off the floor, coupled with a six-inch minimum clearance around the sides of the panel, ensures that safety and operational efficiency are optimized.



Choose the right box based on environment (indoor/outdoor), load capacity, and durability. Check for proper IP/NEMA ratings and material quality. Ensure safe placement: install in ...

## Contact Us

For more information, pricing, or custom solutions, please contact us:

Website: <https://indzawo.co.za>

Email: [sales@indzawo.co.za](mailto:sales@indzawo.co.za)

Phone: +27 71 296 8473

Address: 22 Quantum Street, Midrand, 1685, Gauteng, South Africa

This document is for informational purposes only. Specifications subject to change without notice.

