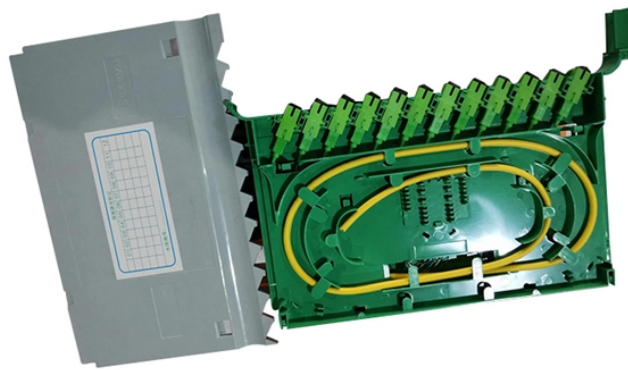


## What is the power consumption of the light control module



### Overview

With control modules, you can cut down on wasted power by dimming lights when full brightness isn't needed or turning them off automatically when no one's around. Occupancy or motion sensors alone can save about 30-40% of lighting energy. How much power does a lighting control panel consume?

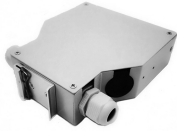
How much power does a lighting control panel consume?

How much power does a lighting control panel consume?

Panel Power Consumption Ratings, see below. PayPal can be used at [icstation.com](http://icstation.com) to purchase items by Credit Card (Visa, MasterCard, Discover, and American Express), Debit Card. Energy conservation and the resulting cost savings are key drivers in the increasing demand for lighting controls. This new range of intelligent marshalling boxes and accessories offers a simple and easily configured system with all the components necessary to distribute power, detector inputs and. What is the current consumption of a 22 mm LED light module?

Determine how much current do the light modules pull. The current consumption is dependent on the supply voltage. It acts as a bridge between your physical lighting fixtures and the smart systems that manage them.

## What is the power consumption of the light control module



Lighting controls can provide energy savings in excess of 50%. Where controls are taken into account, they can aid compliance with the energy efficiency requirements of the Building Regulations and ...



With control modules, you can cut down on wasted power by dimming lights when full brightness isn't needed or turning them off automatically when no one's around. Occupancy or ...



How much power does a lighting control panel consume? Panel Power Consumption Ratings, see below.



Elevate your lighting experience with the DC 3.6-5V LED Light Control Module. This Bluetooth-compatible RGB Lamp Control Board is ideal for smart home applications, offering seamless control ...



What is the current consumption of a 22 mm LED light module? Determine how much current do the light modules pull. The current consumption is dependent on the supply voltage. The ...



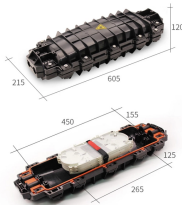
In this video, I will discuss about the "Light Control Module" or commonly called LCM. Starting from the LCM function to the "Power Supply" which is used to activate the LCM.



In the same vein as automatic adjustments, the LCM can dim or turn off the lights if necessary to reduce unnecessary energy consumption. You might also see a decrease in fuel ...



The light control module is a compact, sleek, operator friendly, cost effective module. The rugged high-current switch design allows high-current loads to be handled without the previously required costly ...



The power supply for the remote-control set is derived from a switching power supply module rated at 100 W, which provides an output voltage of 24 V, and converts 220 V AC to 24 V DC.

## Contact Us

For more information, pricing, or custom solutions, please contact us:

Website: <https://indzawo.co.za>

Email: [sales@indzawo.co.za](mailto:sales@indzawo.co.za)

Phone: +27 71 296 8473

Address: 22 Quantum Street, Midrand, 1685, Gauteng, South Africa

This document is for informational purposes only. Specifications subject to change without notice.

