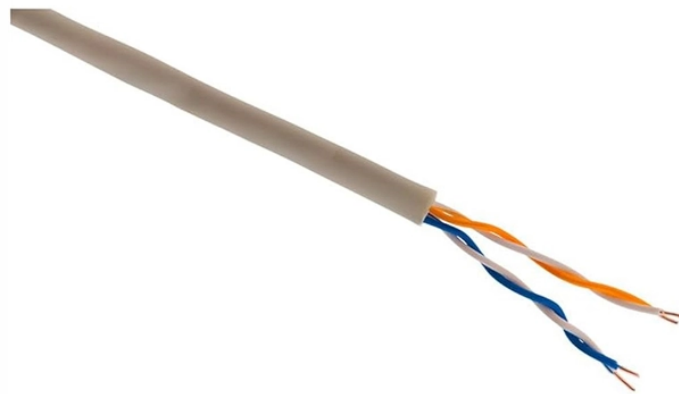


What is the size of the outgoing wires from the distribution box

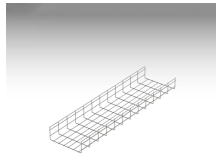


Overview

The wire size depends on the total amperage of the service. Use wire types like SEU, SER, or USE-2, which are rated for UV resistance and moisture. Choosing the right electrical junction box size is crucial for safety and code compliance in your US projects. This guide helps you determine the correct dimensions based on wire fill capacity, device requirements, and installation environment, ensuring a safe and efficient electrical system. But, you may also use aluminum or copper-clad if you can't afford copper. Need Quick Wire Size Calculations?

Use our professional wire. A subpanel is an electrical distribution point added downstream from the main service panel, extending the home's electrical capacity to a specific area like a garage, workshop, or finished basement.

What is the size of the outgoing wires from the distribution box



Grid Cable for marine and offshore applications

Choosing the right wire size is critical for electrical safety and code compliance. This comprehensive guide walks you through NEC requirements, ampacity calculations, and real-world ...



Find the right wire gauge for your sub panel. Use our sub panel wire size calculator to ensure safe and code-compliant electrical installs.



Control cables for external connections shall consist of stranded copper wire with 1.5, 2.5, 4.0 sq. mm or higher cross-sectional areas and shall enter from the bottom.



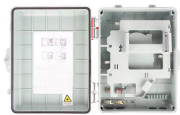
Service entrance conductors (wires that bring electricity from the utility) must be appropriately sized and installed to meet load demands and NEC requirements.



Choosing the right electrical junction box size is crucial for safety and code compliance in your US projects. This guide helps you determine the correct dimensions based on wire fill capacity, ...



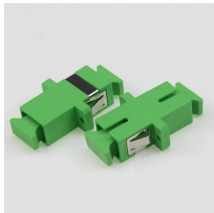
Electrical wire: You will require electrical wires, like the live, neutral, and ground, to be connected from the meter to your breaker box. The best size of wire is #4 AWG copper wire.



Professional wire size calculator based on NEC standards. Calculate proper wire gauge, voltage drop, and ampacity for electrical circuits.



This comprehensive guide examines the appropriate wire types, installation considerations, and technical factors that ensure reliable power distribution from the meter to the ...



For copper conductors, a minimum size of 3 American Wire Gauge (AWG) is required, rated for 100 amps at 75°C. Using a larger size, such as 2 AWG copper (rated for 115 amps), provides an added ...



Choosing the right electrical junction box size is crucial for safety and code compliance in your US projects. This guide helps you determine the correct ...



Use wire types like SEU, SER, or USE-2, which are rated for UV resistance and moisture. For overhead installations, triplex aluminum cables are often used with a neutral messenger.

Contact Us

For more information, pricing, or custom solutions, please contact us:

Website: <https://indzawo.co.za>

Email: sales@indzawo.co.za

Phone: +27 71 296 8473

Address: 22 Quantum Street, Midrand, 1685, Gauteng, South Africa

This document is for informational purposes only. Specifications subject to change without notice.

