

Indzawo Optic Connect

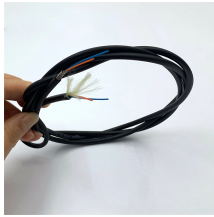
What is the small busbar of the metering cabinet



What is the small busbar of the metering cabinet



A metering cubicle contains a primary horizontal busbar system with a bus tap-off that drops vertically to the bottom of the enclosure. The vertical bus is ...



Commercial metering switchboards provide incoming service and tenant metering arrangements that comply with EUSERC and non-EUSERC utility requirements.



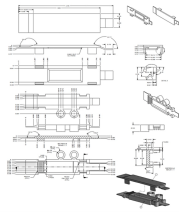
Busways, or bus ducts, are long busbars with protective covers. Rather than branching from the main supply at one location, they allow new circuits to branch off anywhere along the busway.



A busbar is a metallic strip or bar, typically made from copper or aluminum, that conducts electricity within a switchboard, distribution board, ...



Electrical cabinet busbar, also known as electrical cabinet busbar, plays an extremely important role in the electrical system, such as the “heart” that operates all activities.



Galvanized Steel and Aluminum: As with all Milbank products, our enclosures are constructed of G90 galvanized steel or aluminum and are NEMA 3R rated. Finished with an attractive, light gray, baked ...



When safety is top priority, a busbar system with IP2X protection is the best choice. ABB Z-busbar offering is available for 400A, 630A, 1600A and 2500A, to be used either as TN-C or as TN-S with a ...



A busbar is a metallic bar in a switchgear panel used to carry electric power from incoming feeders and distributes to the outgoing feeders. In simple ...



These basic components can be mounted in cabinets or racks (or a combination) and the I/O modules freely mixed and matched in any combination. From small-scale systems to large, fully integrated gas ...



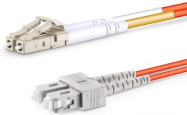
Think of a bus bar as the main highway for electrical current—allowing it to flow between components with minimal resistance and voltage drop. It replaces traditional wiring for high current applications ...



A busbar panel is an electrical switchgear or distribution board assembly where the main electrical conductors are rigid busbars, used to mount and interconnect protective devices like fuses ...



The typical CT cabinet has a removeable busbar between two multi-lug terminal blocks for each phase, and a terminal block for the neutral. The busbar passes through the opening of the ...



The use of busbar for switchgear goes back to the dawn of electricity generation and is very common in both residential load centers of 200A and less and in industrial motor control center (MCC) ...

Contact Us

For more information, pricing, or custom solutions, please contact us:

Website: <https://indzawo.co.za>

Email: sales@indzawo.co.za

Phone: +27 71 296 8473

Address: 22 Quantum Street, Midrand, 1685, Gauteng, South Africa

This document is for informational purposes only. Specifications subject to change without notice.

