

## What is the typical temperature of the hot aisle in a computer room



### Overview

For many, supply air temperatures are optimally between 24 and 25. Many data center designs have computer rooms where cold air is distributed through a raised floor system that uses the under floor space as a supply air plenum formed by the raised floor. Cold aisles are formed by the space. In order to prevent damage to equipment, the environment where the equipment is running must be cooled to no more than 82 degrees. The challenge in a data center, or in a larger on-premise server room, is. The recommended server room temperature should range between 50 to 82 degrees Fahrenheit. The common sense thing to do is to adjust the thermostat and leave it be. Typically, delta-T is around 10 to 12°C (18 to 21).



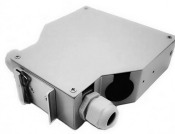
## What is the typical temperature of the hot aisle in a computer room



Server room temperature management is vital for hardware reliability. Discover the optimal range, expert tips, and best practices for maintaining the ...



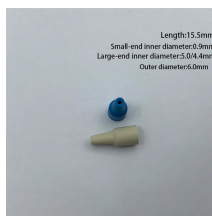
Therefore, in data centers, it is recommended to measure temperatures in aisles at various heights, as well as monitoring the top of the rack, where hot air tends to accumulate. Regarding relative ...



Ideal temperature is between 70° and 75° F. A lay person would suggest that a manager could simply cool the entire room. This has proven to be both inefficient and costly. The cost of managing a data ...



The recommended server room temperature should range between 50 to 82 degrees Fahrenheit. However, you should try and maintain a temperature range between 68 to 71 degrees.



ces are the areas that aren't contained within a hot aisle or a cold aisle. The temperature of the ballroom spaces can be similar to the cold aisles, the hot aisles



In this article, we'll be taking a look at the updated ASHRAE recommended data center temperature and humidity ranges, and how environment monitoring with ...



According to ASHRAE, the recommended temperature range for A1 to A4 class hardware is 18 to 27 degrees C (64.4 to 80.6 degrees F). This metric is based on dry-bulb temperature, which ...



Optimize your data center temperature with ASHRAE guidelines, temperature sensors, and environmental monitoring. Discover best practices and what impacts the temperature in your ...



However, delta-T is very important - the temperature differential between the hot aisle and the cold aisle. Typically, delta-T is around 10 to 12°C (18 to 21.6°F), but 14°C (25.2°F) is a ...



Server room temperature management is vital for hardware reliability. Discover the optimal range, expert tips, and best practices for maintaining the perfect server room temperature.



This leaves the larger data center or server room floor cooled to the appropriate temperature for computer equipment (typically between 50 degrees and 82 degrees Fahrenheit) and ...



In this article, we'll be taking a look at the updated ASHRAE recommended data center temperature and humidity ranges, and how environment monitoring with Room Alert can help you keep your facilities ...



The recommended server room temperature should range between 50 to 82 degrees Fahrenheit. However, you should try and maintain a ...

## Contact Us

For more information, pricing, or custom solutions, please contact us:

Website: <https://indzawo.co.za>

Email: [sales@indzawo.co.za](mailto:sales@indzawo.co.za)

Phone: +27 71 296 8473

Address: 22 Quantum Street, Midrand, 1685, Gauteng, South Africa

This document is for informational purposes only. Specifications subject to change without notice.

