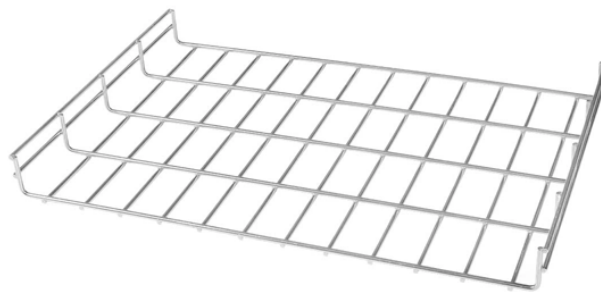


## What is the use of an optical module s ESN



### Overview

EPON, or Ethernet Passive Optical Network, is a fiber-optic network standard that uses Ethernet packets to deliver high-speed data, voice, and video services. In this guide, we will explain what optical signal strength is, how to check it on Cisco IOS using the command line, and how to troubleshoot common light level issues. What are TX and RX Power Levels?

Fiber optic communication relies on light pulses to transmit data. The strength of this light is. We propose an innovative design for an optical Echo State Network (ESN), an advanced type of reservoir computer known for its universal computational capabilities. Our design enables an optical implementation of arbitrary ESNs, featuring flexibility in optical matrix multiplication and nonlinear. As core components of optical communication systems, the proper installation and use of optical modules directly impacts network stability. Think of it as the “translator” for your network equipment, converting electrical signals into optical signals. It uses fiber-optic cables. These cables give fast and steady internet to homes and businesses. It also has Optical Network Units (ONUs). Many users can connect with fewer cables.

## What is the use of an optical module s ESN



The elastic optical network offers several advantages in bandwidth allocation compared to traditional fixed-grid optical networks. These advantages stem from their ability to flexibly and ...



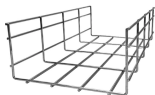
As core components of optical communication systems, the proper installation and use of optical modules directly impacts network stability. This article systematically identifies common ...



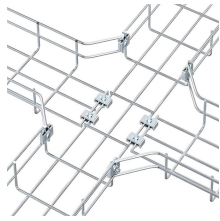
Confused by SFP vs SFP+? Read the definitive 2026 guide on SFP modules. We explain Single Mode vs Multimode, DDM diagnostics, and how to choose the right transceiver for Cisco, Juniper, and more.



In today's connected world, EPON (Ethernet Passive Optical Network) is a game-changer for delivering blazing-fast internet. This guide dives ...



Here, we propose an innovative way to realize an optical implementation of any desired ESN configuration. The advantages provided by an optical reservoir architecture, as stated earlier, ...



Explore the working principles, structures, and performance metrics of optical modules, essential components of optical fiber communication systems. Learn ...



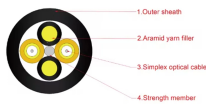
This paper presents an Echo State Network (ESN)-Driven joint decision strategy for a configurable security Non-Orthogonal Multiple Access (NOMA) optical communication system.



Explore the working principles, structures, and performance metrics of optical modules, essential components of optical fiber communication systems. Learn about key indicators such as average ...



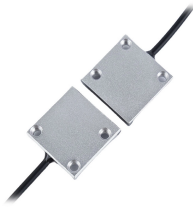
This paper presents an Echo State Network (ESN)-Driven joint decision strategy for a configurable security Non-Orthogonal Multiple Access ...



Get the highest quality, performance-leading optical transceivers for any network architecture. Find the transceiver model to fit your network.



Its primary function is to achieve optoelectronic conversion by converting electrical signals into optical signals and vice versa.



In today's connected world, EPON (Ethernet Passive Optical Network) is a game-changer for delivering blazing-fast internet. This guide dives deep into EPON technology, its benefits ...



Stop guessing your fiber health. Discover how to use Cisco DOM commands to measure real-time TX/RX light levels and ensure your optical network is stable.

## Contact Us

For more information, pricing, or custom solutions, please contact us:

Website: <https://indzawo.co.za>

Email: [sales@indzawo.co.za](mailto:sales@indzawo.co.za)

Phone: +27 71 296 8473

Address: 22 Quantum Street, Midrand, 1685, Gauteng, South Africa

This document is for informational purposes only. Specifications subject to change without notice.

