

What material is the integrated fiber optic welding tray made of



Overview

The Integrated Routing (IR) single element tray is manufactured from ABS and finished to a high specification to eliminate the risk of snagging or microbends. All retaining tabs on the tray have radius edges and rounded corners where fibre may pass. Each single fiber can connect or use arbitrarily. SC FC fiber optic adapters best price and quality. The Fiber Optic Splice Cassette Tray is a devices of connection cable The introduction of fiber optic splice tray, and welding, including final packaging. For fiber splicing, branch, cover can be flipped, the disc can be superimposed, expand capacity, install, extremely easy to use. Its compact capacity and stackable design make it ideal for small-scale or distributed fiber management. Structural standard, 19 inch standard rack mounted, with good versatility and easy installation. The interface diversity panel interface supports multiple types such as FC/SC/DLC, meeting different fiber connection requirements. Engineered for both indoor and outdoor splice.

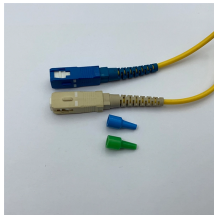
What material is the integrated fiber optic welding tray made of



Leviton Injection-Molded Plastic Fiber Splice Trays provide protection and slack management of heat-shrink fusion spliced fibers (up to 12 or 24 fibers) inside of a fiber enclosure.



12 Cores Fiber Optic Integrated Welding Modular Tray Cassette Plate Plastic Fiber optic welding splice tray is placed in all kinds of communication and electric power industries



Features: 1. Management and storage pigtail. 2. Fiber optic fusion protection. 3. Durable injection-molded plastic trays and covers. 4. Several adapters can be installed: FC, SC, ST, duplex LC.



The Integrated Routing (IR) single element tray is manufactured from ABS and finished to a high specification to eliminate the risk of snagging or microbends. All retaining tabs on the tray have ...



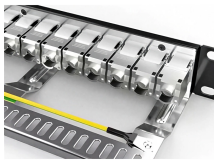
The trays are engineered for use with indoor or outdoor splice hardware with both loose tube and tight-buffered optical cable designs. The metal-tray series consists of a rugged aluminum base and cover ...



This splice tray neatly arranges and safeguards fiber optic splices, enabling ...



The metal-tray series features a rugged aluminum base and cover with crimpable metal tabs for buffer tube strain relief — finished in black powder coat for easy fiber identification and additional ...



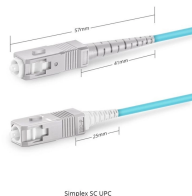
This splice tray neatly arranges and safeguards fiber optic splices, enabling seamless signal transmission. With its 12 - core design, it can manage multiple fiber connections.



Made of high-quality ABS plastic, the tray is lightweight yet durable, ...



COYOTE splice trays are injection molded and have hinged, clear plastic covers to protect and allow for visible inspection of the fibers. They are available in Legacy and LITE-GRIP® styles, each providing ...



Description This products is made up of cross linked polyolefin heat-shrinkable tubes, hote melt tubes and Stainless steel needle. It is specifically designed for the protection of fiber optical...



Made of high-quality ABS plastic, the tray is lightweight yet durable, designed to withstand daily handling and long-term deployment. Designed with a controlled bend radius and organized ...

Contact Us

For more information, pricing, or custom solutions, please contact us:

Website: <https://indzawo.co.za>

Email: sales@indzawo.co.za

Phone: +27 71 296 8473

Address: 22 Quantum Street, Midrand, 1685, Gauteng, South Africa

This document is for informational purposes only. Specifications subject to change without notice.

