

# What quota should be used for cable tray cover plates



## Overview

Due to their exposure to the open air because of the cable trays, the wires contained within need a very durable outer covering. The regulations dictate that the cables must either be Type TC (also known as Tray Rated) or must be metal-armored (Type MC). The short answer is no. This is a description of how to select, install, and support these metal or plastic frames, on which electrical wires are installed. IEC 61537 covers cable tray and cable ladder systems for the support and accommodation of cables, while NEC Article 392 governs cable. The flexibility and scalability of cable trays make them an ideal choice for environments where cable density and organization can significantly impact operational efficiency.

## What quota should be used for cable tray cover plates



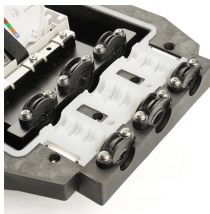
This article explains the main requirements and good practices for cable tray systems, including tray types, materials, loading, supports, bonding, cable selection, and installation details.



Solid bottom steel cable trays with solid covers and wrap around cover clamps can be used to provide EMI/RFI shielding protection for sensitive circuits.



They should be used in case the tray is located in a high-traffic area where tools may drop on the wires. They are also used to cover outdoor trays to shield the heat of the sun on the ...



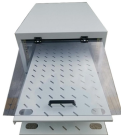
What matters for cable tray sizing is whether the conductor sets are cabled by a manufacturer or single conductors per manufacturer and perhaps "cabled" by installer... or not.



This guide covers the critical steps, from selecting the right electrical cable tray and performing accurate cable fill calculations to managing a safe cable pull through and ensuring all bonding and grounding ...



Cables rated 600 volts or less can be installed together in the same cable tray without additional separation, provided they meet the NEC requirements for fill and support .



Use this cable tray sizing calculator to check fill %, select tray size, and comply with IEC 61537 & NEC 392 with formulas, example and checklist.



The entire amount of the cross-sectional areas for all of the single conductor cables that are going to be positioned in the cable tray needs to be equal to or less than the permissible cable ...



This article provides a comprehensive framework that governs various aspects of cable tray installations, including the types of cables that are deemed acceptable for use, requirements for ...



The Cable Tray Institute is making available the current edition of this practical guide for the proper installation of aluminum or steel cable tray systems. These guidelines will be useful to engineers, ...

## Contact Us

For more information, pricing, or custom solutions, please contact us:

Website: <https://indzawo.co.za>

Email: [sales@indzawo.co.za](mailto:sales@indzawo.co.za)

Phone: +27 71 296 8473

Address: 22 Quantum Street, Midrand, 1685, Gauteng, South Africa

This document is for informational purposes only. Specifications subject to change without notice.

