

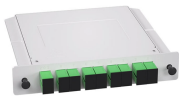
What should be used to bind cables in cable trays



What should be used to bind cables in cable trays



Grounding and bonding are essential for safety. They protect personnel and equipment by providing a safe path for fault current. NEC Article 392 governs cable tray grounding ...



Steel or aluminum cable tray systems shall be permitted to be used as equipment grounding conductors, provided all the following requirements are met: (1) The cable tray sections ...



In this step-by-step guide, we will explore the process of securing cables using nylon cable ties, a versatile and widely used solution for cable management. Start by organizing the cables you ...



This guide covers the critical steps, from selecting the right electrical cable tray and performing accurate cable fill calculations to managing a safe cable pull through ...



Code Change Summary: New requirements for cable ties used to support cables in a cable tray. A common method used to secure and support cables in a cable tray is a cable tie or zip tie.



National Electrical Code Section 392.8(B) states that in other than horizontal cable tray runs, the cables shall be fastened securely to transverse members of the cable trays. In horizontal cable tray runs, ...



Cable trays must be adequately supported to carry the weight of cables plus any additional loads (such as snow or ice for outdoor installations). Use supports (wall brackets, trapeze ...



Learn common methods for connecting cable trays safely and efficiently. Our guide covers splice plates, quick-connects, and key tips for secure ...



Cables must be secured to the cable tray prior to and after the transition, and protected by guarding or location. The electrical connection between sections can be maintained with bonding jumpers or a ...



Strong hangers or brackets should be used to ensure that cable trays do not fall or hang. According to the regulations under NEC 392.30, these supports have to be put at a consistent ...



For permanent or seldom-changed cable runs, such as backbone cables or trunk cables in overhead trays, installers may use standard nylon ties to bundle and secure them.



protect cable exiting the tray. Barrier strips are used to separate different types of cable tray. A _____ is used to bind a raw metallic edge over which a cable might pass. B. barrier strip cable protector. ...

Contact Us

For more information, pricing, or custom solutions, please contact us:

Website: <https://indzawo.co.za>

Email: sales@indzawo.co.za

Phone: +27 71 296 8473

Address: 22 Quantum Street, Midrand, 1685, Gauteng, South Africa

This document is for informational purposes only. Specifications subject to change without notice.

