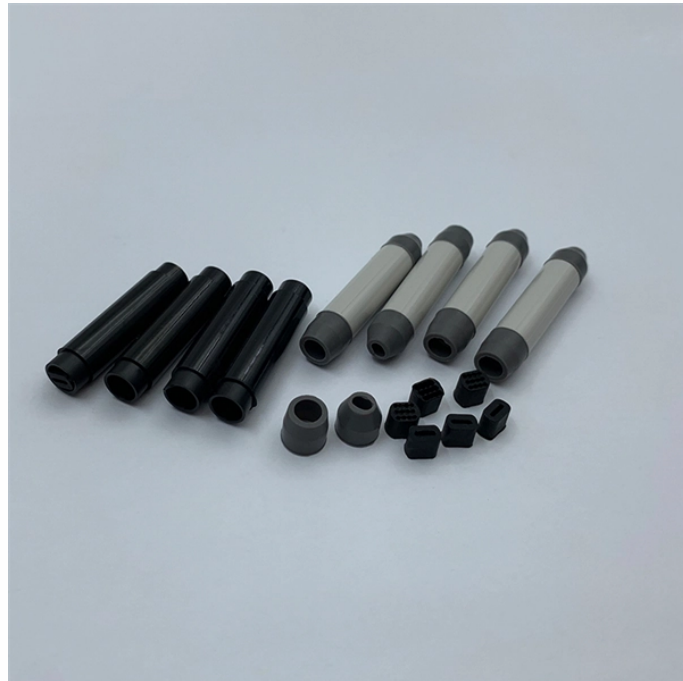


What size is suitable for a main electrical distribution box on a construction site



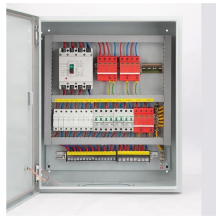
What size is suitable for a main electrical distribution box on a cons



Choosing the right electrical junction box size is crucial for safety and code compliance in your US projects. This guide helps you determine the correct ...



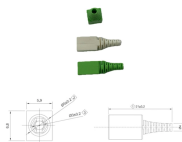
Choosing the right electrical junction box size is crucial for safety and code compliance in your US projects. This guide helps you determine the correct dimensions based on wire fill capacity, ...



Select the right power distribution box by matching site power needs, safety standards, and future expansion for reliable construction site performance.



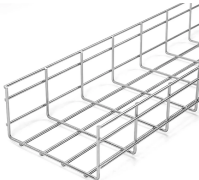
In this guide, I'll walk you through a practical, step-by-step process to size your distribution box based on actual load current. We'll cover everything from understanding your circuits to planning for future ...



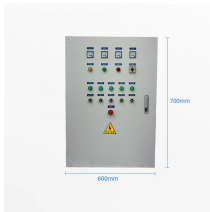
The NEC code of junction box keeps your electrical work safe and reliable. You must use approved materials, choose the right size box, and make sure you ground everything correctly.



Proper junction box sizing is crucial for safe electrical installations. Our junction box sizing calculator simplifies NEC compliance by automatically calculating minimum dimensions based on your specific ...



This guide explores control panels, electrical boxes, breaker panels, bus bars, junction boxes, and custom enclosures to help you understand their sizes, types, and common applications.



From residential 100-amp panels to massive 600 amp main distribution panels in commercial facilities, this comprehensive guide will help you understand distribution board types, ...



In today's step-by-step guide, we will demonstrate how to select the right size panelboard (whether it's a load center, distribution board, or circuit breaker panel) according to NEC and IEC standards, with ...



This guide explains standard electrical box dimensions by type, compares common sizes, and helps you select the right box for residential, commercial, and light industrial applications.



This specification guide provides system designers, electrical engineers, and procurement professionals with the technical criteria needed to select compliant outdoor electrical ...

Contact Us

For more information, pricing, or custom solutions, please contact us:

Website: <https://indzawo.co.za>

Email: sales@indzawo.co.za

Phone: +27 71 296 8473

Address: 22 Quantum Street, Midrand, 1685, Gauteng, South Africa

This document is for informational purposes only. Specifications subject to change without notice.

