

## What styles of cable tray expansion joints are available



## What styles of cable tray expansion joints are available



In designing supports for a cable tray system, consideration should be given to the loads associated with future cable additions and any additional loading that may be applied to the cable tray system (e.g., ...



Cable separators (divider strips) are available for all tray types in aluminum, HDGAF, mill-galvanized, galvanized and 304 or 316 stainless steel. Separators come in either 3", 5", 6", 7", 8", or 10" heights ...



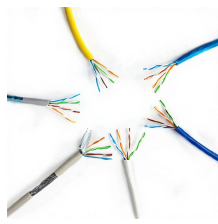
Our wind certification report provides you with list of acceptable B-Line series cable tray supports, fittings and covers based off of the environmental conditions, cable loading, and type of cable tray in your ...



Another helpful document is NEMA Publication VE 2-2013 Cable Tray Installation Guidelines. According to the document, there are four basic types of cable tray connectors including rigid, expansion, ...



Standard covers are plane type and 1.00 mm thick. On request, higher thickness can be manufactured as well as flowing type covers.



There are expansion joint splice plates and bonding jumpers available from cable tray manufacturers. A cable tray support should be located within 2 feet of each side of the expansion joint splice plates ...



1) Cable trays need expansion joints to allow for thermal contraction and expansion due to temperature changes. The NEC requires expansion joints where necessary, while NEMA standards provide ...



Based on 70°C temperature differential, the maximum spacing between expansion joints for steel is 102ft while 52ft when using aluminum and 133ft when using fiberglass material.



Our thermal expansion guides are recommended to provide longitudinal movement from a fixed point. Two guides should be used and attached to each side rail.



Discover best practices for cable tray expansion joint installation to accommodate thermal changes, ensuring structural integrity and compliance with NEC and NEMA standards.



Learn how to manage thermal expansion and contraction in cable tray systems with expert tips on expansion joints, guides, and spacing to ensure long-term structural integrity.

## Contact Us

For more information, pricing, or custom solutions, please contact us:

Website: <https://indzawo.co.za>

Email: [sales@indzawo.co.za](mailto:sales@indzawo.co.za)

Phone: +27 71 296 8473

Address: 22 Quantum Street, Midrand, 1685, Gauteng, South Africa

This document is for informational purposes only. Specifications subject to change without notice.

