

What types of guide rails are there for electrical distribution boxes



What types of guide rails are there for electrical distribution boxes



The most common type is the Top Hat rail (TH35/TS35), which is 35 mm wide and used for standard applications like circuit breakers. There are also C-section and G-section rails for ...



Learn everything about DIN rail, including DIN rail sizes, types, materials, and installation. Discover key specs like DIN rail 35mm x 7.5mm and DIN rail slotted specs.



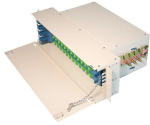
Learn about the different types of DIN rails, their importance in electrical installations, and how DIN rail enclosures can protect your components. Get insights on selecting the right DIN rail ...



Usage: DIN rails, both perforated and non-perforated, are ideal for various modules such as automatic switches, relays, circuit breakers, phase monitoring devices, and more. They help efficiently organize ...



Essentially, DIN rails are used to mount various types of electrical equipment like circuit breakers. A DIN rail features a relatively simple design and is vital for the installation, servicing, and ...



These rails are symmetrical within the tolerances given and referenced by the standard EN 50024 (abrogated). There are four popular C section rails, C20, ...



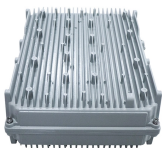
DIN rails are standardized metal rails used to mount electrical components, providing organizational and structural benefits in various installations. There are multiple types of DIN rails, ...



A DIN rail is a metallic structure used to mount various electrical equipment, such as relays, circuit breakers, power supplies, etc. It comes in multiple shapes and sizes and is mounted on a surface ...



Let's break down the three most common types you'll come across, along with where they shine. This is the industry standard. The Top Hat rail, also known as the 35mm rail, features a ...



Explore panel hardware including DIN rail, wire duct, and strut channel for secure, organized industrial and commercial control panels.



In this edition of Polycase TechTalk, we'll discuss the basics of DIN rails and why they're such an important part of electrical device design. We'll also cover the many DIN rail enclosure and ...

Contact Us

For more information, pricing, or custom solutions, please contact us:

Website: <https://indzawo.co.za>

Email: sales@indzawo.co.za

Phone: +27 71 296 8473

Address: 22 Quantum Street, Midrand, 1685, Gauteng, South Africa

This document is for informational purposes only. Specifications subject to change without notice.

