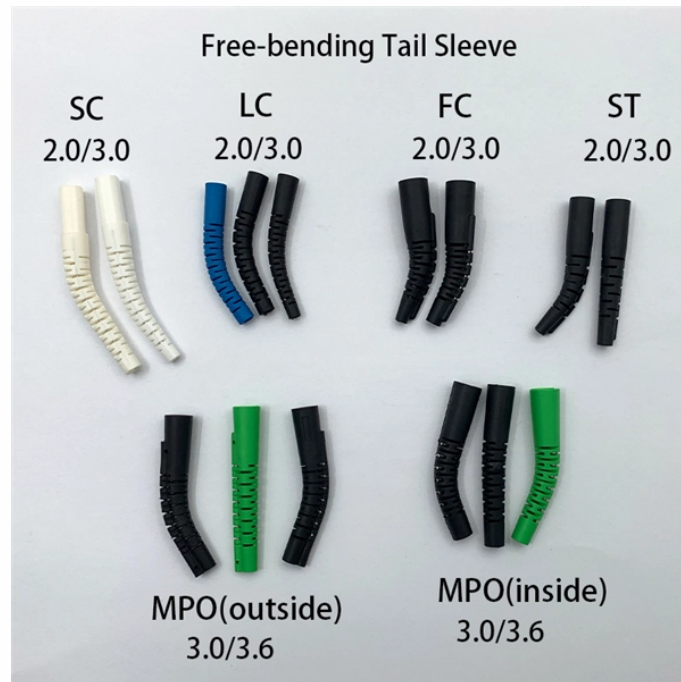


## Where are the wiring ports in the distribution box



### Overview

Wiring Direction: Wiring between the main circuit breaker and each branch circuit breaker in the box generally goes on the left, and the wiring out of the distribution box generally goes on the right. Binding Requirements: The wires should be bound with plastic. Choose based on where you'll install the box. Inside the box, you'll find things like circuit breakers, busbars, terminal blocks, and wires. Some boxes also include DIN rails for mounting extra devices and cable entry. A distribution board or distribution box is where the main power supply is distributed to multiple loads. Single Phase Distribution Box generally consists of Double Pole MCBs, Single Pole MCBs, and RCCBs. It is typically located in a basement, garage, utility room, or other accessible area. The panel box contains a series of circuit breakers or fuses that. Distribution board is a safe system designed for house or building that included protective devices, isolator switches, circuit breaker and fuses to safely connect the cables and wires to the sub circuits and final sub circuits including their associated Live (Phase) Neutral and Earth conductors. more Welcome to our channel! In this video.

## Where are the wiring ports in the distribution box



Wiring Direction: Wiring between the main circuit breaker and each branch circuit breaker in the box generally goes on the left, and the wiring out of the distribution box generally goes on the ...



Learn how to install a distribution box safely and correctly. Covers wiring, placement, standards, and expert tips for a compliant setup. A distribution box is the heart of any electrical ...



See what's inside your electrical service panel, or breaker box, the heart of your home's electrical system.



Below is a Wiring diagram of the distribution board, Single phase electric supply from electric pole and Energy meter to the main distribution board (Without RCD = Residual Current Devices).



Connect the phase and neutral wires from the input power supply to the input of the Main MCB. Connect the output of the Main MCB to the input of the RCCB. If you use a DP MCB for output ...



What's the difference between a distribution box and a sub-panel? A distribution box typically refers to the main electrical panel that receives power from the utility service. A sub-panel is ...



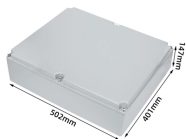
In this video, we'll walk you through the process of wiring a home distribution box with a detailed connection diagram. Whether you're an electrician or a DIY enthusiast, this guide will help you ...



How to wire a DB - Distribution Board Wiring  
Distribution Board or DB is an electricity supply system or a common enclosure that distributes the electrical power feed into subcircuits.



Find out how to properly wire an electrical panel box with a comprehensive diagram and step-by-step instructions.



In this video, we'll walk you through the process of wiring a home distribution box with a detailed connection diagram.

## Contact Us

For more information, pricing, or custom solutions, please contact us:

Website: <https://indzawo.co.za>

Email: [sales@indzawo.co.za](mailto:sales@indzawo.co.za)

Phone: +27 71 296 8473

Address: 22 Quantum Street, Midrand, 1685, Gauteng, South Africa

This document is for informational purposes only. Specifications subject to change without notice.

