

## Which departments need cable trays



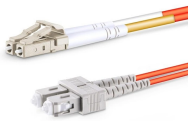
### Overview

Cable trays are versatile and used in multiple sectors: Construction: Office buildings, shopping malls, and hospitals. According to the 2005 National Electrical Code® (NEC), a cable tray system is “ unit or assembly of units or sections and associated fittings forming a structural system used to securely fasten or support cables and raceways. When properly selected and installed, cable trays simplify routing, improve accessibility, and support future expansion while. A cable tray is a system built to support and protect electrical cables and wires. People use them in many buildings and work places to give cables a steady place to run. These systems are more flexible than closed conduit and.

## Which departments need cable trays



Cable trays are a part of a planned cable management system to support, route, protect and provide a pathway for cable systems. Cable trays support cables across open spans in the same way that ...



Cable trays are a part of a planned cable management system to support, route, protect and provide a pathway for cable systems. Cable trays feature flexibility unmatched by conduit, as cables are easier ...



What are cable trays for? We explain cable trays roles in electrical systems: supporting, protecting, and organising cables ...



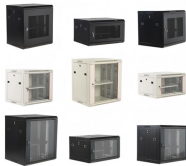
This article provides a comprehensive framework that governs various aspects of cable tray installations, including the types of cables that are deemed acceptable for use, requirements for ...



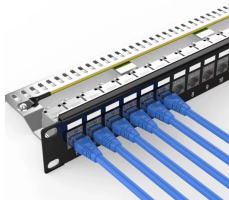
Core rules for selecting, installing, grounding, and filling cable trays—clearances, materials, separation, and bonding explained.



This article explains the main requirements and good practices for cable tray systems, including tray types, materials, loading, supports, bonding, cable selection, and installation details.



Discover over 100 expert answers about cable trays, covering key topics like material selection, load capacity, installation methods, and maintenance.



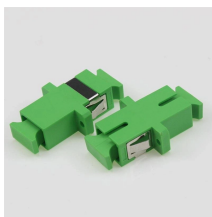
Learn how to choose the best cable tray system for your needs. Explore types, materials, installation tips, and NEC compliance in this expert guide.



Cable tray is the preferred wiring method for industrial facilities, data centers, and large commercial buildings where routing dozens or hundreds of cables through individual conduits would ...



Master NEC Article 392 with our comprehensive guide. Learn essential cable tray requirements for installation, grounding, and fill capacity to ensure full electrical compliance.



Learn where electrical cable trays are used and how they improve wiring safety, management, and efficiency in any project.



When properly planned, installed, and serviced, cable trays provide safe routing of power, low voltage control, data, and telecommunications wiring. Cables in these trays are easy to mark, find, and remove.



Question 5: We are using ladder type cable trays at many of our facilities for telecommunications wiring. Do you have any information available for recommended installation clearances for this type of cable ...

## Contact Us

For more information, pricing, or custom solutions, please contact us:

Website: <https://indzawo.co.za>

Email: [sales@indzawo.co.za](mailto:sales@indzawo.co.za)

Phone: +27 71 296 8473

Address: 22 Quantum Street, Midrand, 1685, Gauteng, South Africa

This document is for informational purposes only. Specifications subject to change without notice.

