

Which is the access layer switch



Which is the access layer switch



In a typical enterprise network architecture, the access layer switch is the first point of contact between end-user devices and the rest of the network. These switches connect endpoints such as PCs, ...



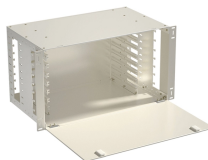
The access layer consists of layer 3 switches, which take routed and switched data packets from the distribution switches and then route them to the access devices in subnets.



Discover Instagram's journey from a simple photo app to a social media giant powering businesses, with 2 billion users and a billion-dollar Facebook acquisition.



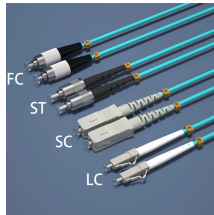
This article breaks down the differences between L2 and L3 switches in the access layer, analyzes key decision factors like network scale and complexity, and finally provides a practical ...



The access layer switch sits at the edge of the network, acting as the direct on-ramp for all end-user devices. This is where your laptops, VoIP phones, printers, and wireless access points ...



Instagram. 68,676,310 likes · 541,597 talking about this. Discover what's new on Instagram 📷



All in all, the access switch is usually a layer 2 switch, and the distribution switch is a Layer 3 switch. When multiple access switches among different VLANs are ...



Switches in this layer are called access switches. End devices connect to the LAN through the access switches. In other words, an access switch forwards traffic between connected ...



Instagram is an American photo and short-form video sharing social networking service owned by Meta Platforms. It allows users to upload media that can be edited with filters, be organized by ...



Instagram ... Instagram



It explains how the three layers work together and why the access switch matters at the network edge. The access switch serves as the physical on-ramp to the enterprise network. Rather ...



An access layer switch refers to a network device that is designed in such a way that it connects end users' devices like computers, telephones, and printers to the more extensive ...



All in all, the access switch is usually a layer 2 switch, and the distribution switch is a Layer 3 switch. When multiple access switches among different VLANs are required to be aggregated, a distribution ...



Instagram is a leading social media platform for photo and video sharing, with over 3 billion active users. You can access it via your phone (Android, iOS) or any system equipped with an ...



- Turn your life into a movie and discover short, entertaining videos on Instagram with Reels. - Customize your posts with exclusive templates, music, stickers and filters.



686M Followers, 189 Following, 8,435 Posts - Instagram (@instagram) on Instagram: "Discover what's new on Instagram 📷 "



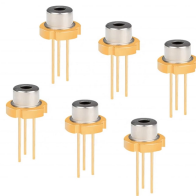
Create an account or log in to Instagram - Share what you're into with the people who get you.



Download Instagram by Instagram, Inc. on the App Store. See screenshots, ratings and reviews, user tips, and more apps like Instagram.



Bringing you closer to the people and things you love. - Instagram from Meta. Connect with friends, share what you're up to or see what's new from others all over the world. Explore our community ...



The access layer: Where users meet the network
The access layer is where end-user devices connect to the network. This includes workstations, phones, printers, wireless access points, ...



Access layer switches sit at the edge of a LAN and connect computers, printers, phones, and IoT gadgets to the wider network. Besides forwarding traffic, they can enforce security policies ...

Contact Us

For more information, pricing, or custom solutions, please contact us:

Website: <https://indzawo.co.za>

Email: sales@indzawo.co.za

Phone: +27 71 296 8473

Address: 22 Quantum Street, Midrand, 1685, Gauteng, South Africa

This document is for informational purposes only. Specifications subject to change without notice.

