

## Which part of the fiber optic ODF is it



### Overview

ODF is the abbreviation of Optical Distribution Frame, which is used for the termination and wiring of backbone optical cables in fiber optic communication systems. As fiber optic infrastructure expands to meet the demands of cloud computing, streaming, and high-speed connectivity, managing the sheer volume of cables has become a complex challenge.



## Which part of the fiber optic ODF is it



What Is an ODF? An Optical Distribution Frame (ODF) is a dedicated unit designed to organize, terminate, and interconnect fiber optic cables. It brings together fiber splicing, patching, and ...



What Is an ODF? An Optical Distribution Frame (ODF) is a dedicated unit designed to organize, terminate, and interconnect fiber optic cables. It brings ...



An Optical Distribution Frame (ODF) is the central hub of your fiber optic network. It manages the connection, splicing, and distribution of optical signals in a single location. Its primary ...



ODF, also known as optical distribution frame or fiber optic patch panel, is a critical device used in optical communication for managing and distributing optical fibers. It is usually a ...



In the complex architecture of fiber optic networks, the Optical Distribution Frame (ODF) serves as the linchpin for organizing, protecting, and distributing optical signals.



An Optical Distribution Frame (ODF) is the central hub for fiber splicing, termination, patching, and cable protection in modern optical networks.



ODF is the abbreviation of Optical Distribution Frame, which is used for the termination and wiring of backbone optical cables in fiber optic communication systems. It facilitates the ...



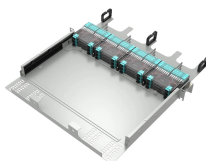
ODF module is its core component, which includes fiber optic splicing trays, fiber optic cable interfaces and panels and so on. Modules are usually modular design, can be assembled and ...



An Optical Distribution Frame (ODF) is the central hub for fiber splicing, termination, patching, and cable protection in modern optical networks.



Learn what an Optical Distribution Frame (ODF) is, its key components, types, and how to choose the best ODF for your fiber optic network needs. Ideal for data centers, telecom, and FTTH ...



An Optical Distribution Frame (ODF) is an intelligent device in the fiber optic network that helps to organize and manage optical cables. It serves as a merging point for the optical fibers, ...



An Optical Fiber Distribution Frame (ODF) centralizes fiber connections, ensures protection, and streamlines network management for reliable, scalable optical communication systems.

## Contact Us

For more information, pricing, or custom solutions, please contact us:

Website: <https://indzawo.co.za>

Email: [sales@indzawo.co.za](mailto:sales@indzawo.co.za)

Phone: +27 71 296 8473

Address: 22 Quantum Street, Midrand, 1685, Gauteng, South Africa

This document is for informational purposes only. Specifications subject to change without notice.

