

## Wires below the distribution box

### SUPPORTS DIN RAIL INSTALLATION



### Overview

This video shows real on-site footage of electrical installation, demonstrating safe and standardized wiring methods used by professionals. Covers wiring, placement, standards, and expert tips for a compliant setup. Available in 2, 4 or 10 gang capacity with varying depths and Black, Brass, Nickel, Bronze or Aluminum finishes, the boxes are designed to meet any decor and electrical need. The connectorized input whip allows the boxes to be installed in minutes and relocated for future. In this video, we'll walk you through the process of wiring a home distribution box with a detailed connection diagram. What is Distribution Board?

Distribution board.



## Wires below the distribution box



Correct wiring methods for circuit breakers within distribution boxes are fundamental to ensuring electrical safety and compliance with established codes. The distinction between 1P and 2P ...



WIRES develops and disseminates critical industry research that helps inform regulatory and policy-making decisions. Our reports and white papers demonstrate the need for, and benefits ...



What's the difference between a distribution box and a sub-panel? A distribution box typically refers to the main electrical panel that receives power from the utility service. A sub-panel is ...



In this video, we'll walk you through the process of wiring a home distribution box with a detailed connection diagram. Whether you're an electrician or a DIY enthusiast, this guide will help ...



Wiring Direction: Wiring between the main circuit breaker and each branch circuit breaker in the box generally goes on the left, and the wiring out of the distribution box generally goes on the ...



Find your local branch here. Email Us! Have a question? We're here to help. <meta name="description" content="Serving Southern California since 1953, Walters Wholesale Electric provides electrical ...



Learn how to install a distribution box safely and correctly. Covers wiring, placement, standards, and expert tips for a compliant setup.



Electrical wiring and electrical connectors are essential elements in residential and commercial buildings. In fact, the average home has about two miles of cable running through it.



Send signals to control machinery and automated systems. With designations such as THHN or THWN, building wire brings power to wall outlets and outlet boxes. Resists corrosion and chemicals in most ...



Find out how to properly wire an electrical panel box with a comprehensive diagram and step-by-step instructions.



Correct wiring methods for circuit breakers within distribution boxes are fundamental to ensuring electrical safety and compliance with established codes. ...



Electrical wire is an assembly of one or more conductors that are insulated but do not have an outer sheath/encasement. The conductors in an electrical wire are either solid or stranded metal conductors.



Wiring arrangement: Arrange the wires neatly in the box, fix them with zip ties, avoid wires from tangling or coming into contact with sharp edges, and reserve a certain amount of space ...



Distributes all cable conductors to up to three locations (one "IN", three "OUTS") to increase the amount of floor boxes fed from a single Zone Distribution Box output whip.



All secondary circuit control wires or cables shall be multi strand soft copper wires, and the wiring terminals shall be of appropriate specifications. After tin ironing, they shall be crimped with special ...



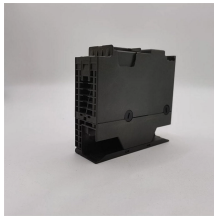
Shop electrical wire and cable at Ace, with indoor and outdoor wire available in a range of amp ratings, gauges and lengths for any electric installation.



Discover flexible aluminum wire for jewelry and craft projects. Also find electrical wire for automotive and electronics applications.



Learn how to wire a distribution box step by step! This video shows real on-site footage of electrical installation, demonstrating safe and standardized wiring methods used by professionals.



Learn the different types of electrical wires and cables and how to identify each, so you can choose the right ones for your next home project.

## Contact Us

For more information, pricing, or custom solutions, please contact us:

Website: <https://indzawo.co.za>

Email: [sales@indzawo.co.za](mailto:sales@indzawo.co.za)

Phone: +27 71 296 8473

Address: 22 Quantum Street, Midrand, 1685, Gauteng, South Africa

This document is for informational purposes only. Specifications subject to change without notice.

