

Wiring Method for Italian Level 3 Distribution Box



Overview

Check for proper IP/NEMA ratings and material quality. Ensure safe placement: install in dry, accessible areas with good ventilation and at appropriate height (typically ~1. However, the key to a safe and reliable system lies in proper installation. If it's done poorly, you risk short circuits, fire hazards, or system failure. Done right, it ensures. Connection method: Each switch takes a wire from the incoming point and connects it to the incoming end of the switch, or uses parallel connection to reduce the difficulty of wiring. Wiring Direction: Wiring between the main circuit breaker and each branch circuit breaker in the box generally. By signing up to the Global Compact in 2006, this approach has been given a wider dimension. The Group's environmental commitment is centred on 3 guiding lines: taking on board environmental management in the running of its industrial sites, reducing the environmental impact of its products by. Identifying Symbols and Labels: The first step in reading an electrical panel box wiring diagram is to familiarize yourself with the symbols and labels used. These symbols represent different electrical components, such as switches, outlets, lights, and circuit breakers.

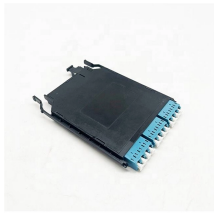
Wiring Method for Italian Level 3 Distribution Box



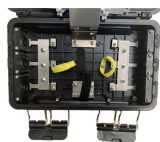
Learn how to install a distribution box safely and correctly. Covers wiring, placement, standards, and expert tips for a compliant setup.



In particular, it is applicable to any apparatus used for production, conversion, transmission, distribution and use of electrical power, such as machines, transformers, devices, measuring instruments, ...



Learn the European wiring diagram symbols used for electrical circuits. Understand the symbols to decipher diagrams and troubleshoot electrical issues.



Wiring Direction: Wiring between the main circuit breaker and each branch circuit breaker in the box generally goes on the left, and the wiring out of the distribution box generally goes on the ...



Find out how to properly wire an electrical panel box with a comprehensive diagram and step-by-step instructions.



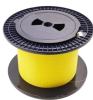
This means, in practical terms, that a medium-sized 230/400 V 3-phase 4-wire distribution cable of 240 mm² copper conductors would be able to supply a total load of 292 kVA at 0.8 PF lagging, ...



Training Systems for Electrical Wiring Techniques for Electrical Wiring in Buildings, Presented in Project-oriented Fashion to Emulate Authentic Practice



METHOD STATEMENT FOR Electric panel and distribution box installation and termination - Free download as PDF File (.pdf), Text File (.txt) or read online for free. This document provides a method ...



Discover in a unique guide how to design, install, and operate reliable and optimized MV solution according to latest IEC standard. Read more about innovation and evolution to increase ...



A new generation of wiring accessories for all your lighting, energy distribution, data and audio-video content, blind management, climate control and safety requirements.



Learn the European wiring diagram symbols used for electrical circuits. Understand the symbols to decipher diagrams and troubleshoot electrical issues.

Contact Us

For more information, pricing, or custom solutions, please contact us:

Website: <https://indzawo.co.za>

Email: sales@indzawo.co.za

Phone: +27 71 296 8473

Address: 22 Quantum Street, Midrand, 1685, Gauteng, South Africa

This document is for informational purposes only. Specifications subject to change without notice.

